



the posse  
**program**

2011 ANNUAL REPORT



---

**“What my dad wants most in life is for his children to be successful. To go to a top school is a once-in-a-lifetime opportunity that he’s wanted so much for me but would never have been able to provide. For us, Posse means opportunity.”**

**J**ohn Albers is a senior at Alfred Bonabel Magnet Academy High School and a member of the National Honor Society. This fall he will enroll at Tulane University as a member of the first Posse from New Orleans.

“What makes me most proud of John is his drive and determination—his ability to overcome, in my opinion, unbelievable obstacles,” says John’s father, Angelo Albers. “We lost both his mother and sister when John was young. I’m a single dad raising three boys. I own a chicken farm. Even as well

as he does in school, without Posse, John would never have had this opportunity. Now he’s going to be living on campus. I’m transitioning my family from the country to the city to be closer to him.

“Posse has changed my family’s lives. It’s made my two other sons extremely jealous and now they’ve both gone back to school this year. John is my youngest son, and what I want most for him is happiness. I just have to say to Posse, thank you.”



**John Albers**, Tulane Posse Scholar (New Orleans), and **Angelo Albers**, proud father, with John’s grandmother **Santa Albers** in front of their family home.

---

# introduction

**P**osse Scholars have built a reputation for success. While the vast majority hail from low-income neighborhoods and belong to minority groups that are traditionally underrepresented on college campuses, most Posse Scholars go on to lead campus organizations, win prestigious awards, and graduate. The result is a growing network of Posse alumni who are building promising careers as doctors, engineers, lawyers, teachers, businessmen, entrepreneurs, academics—all united by a shared Posse experience.

Posse Scholars succeed at such high rates because of who they are: intellectually ambitious, community-minded leaders in the making. They are supported by countless individuals who believe in their potential. These include high school guidance counselors and members of community-based organizations who nominate students, volunteers who act as writing coaches and interviewers, college administrators and professors who provide mentoring, corporate executives and other organizational leaders who broker internship opportunities, and more.

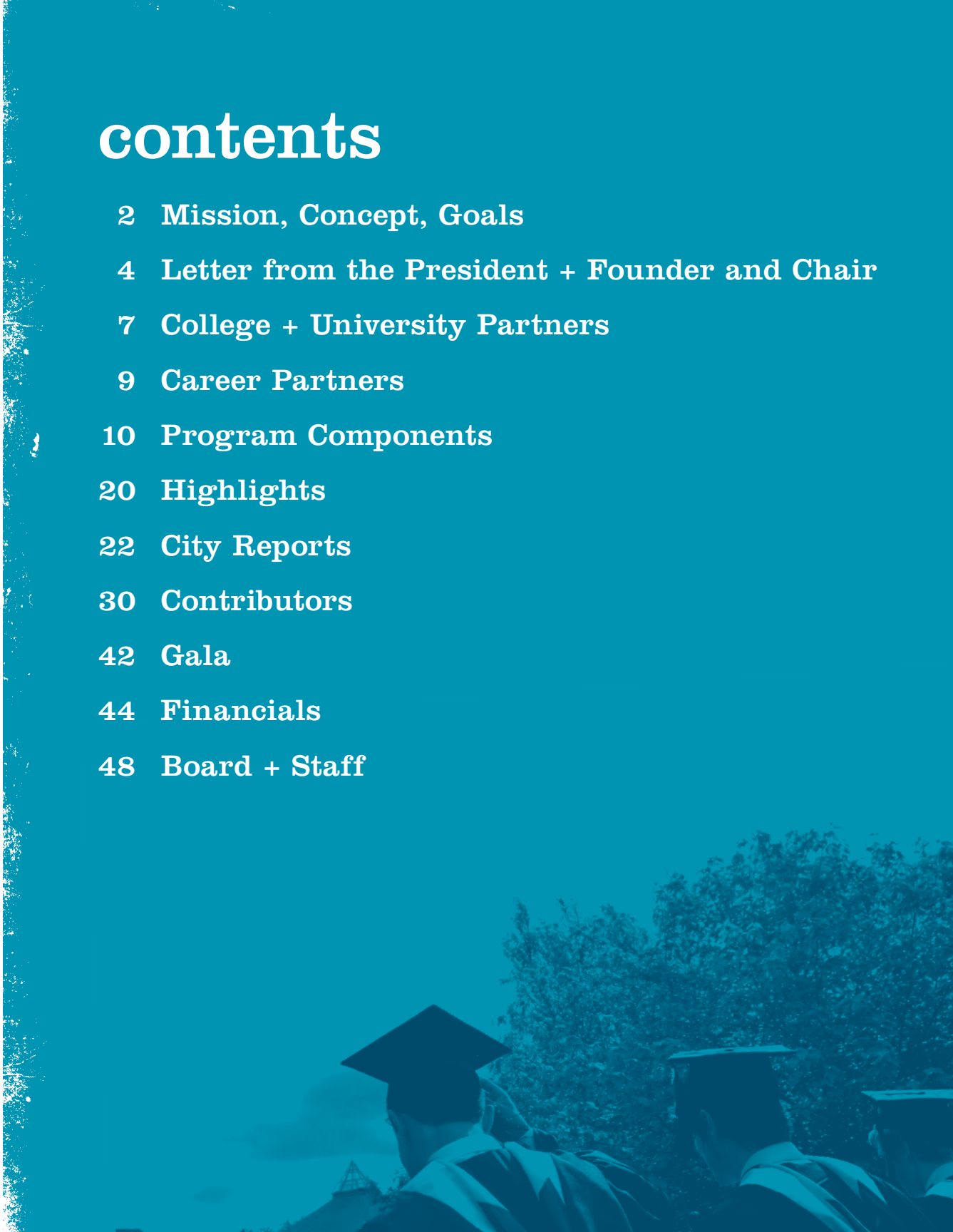
**The Posse program has evolved over its 23-year history to provide the most effective support for the extraordinary young people it serves.**

Through the program, Scholars receive training during their senior year of high school, mentoring once they matriculate on campus, and the opportunity to intern at leading companies and organizations throughout their college careers. In addition, Posse's elite partner colleges and universities award Posse Scholars four-year, full-tuition scholarships, allowing them to focus on their studies and other campus commitments. With such a comprehensive network of support, it is no wonder Posse Scholars excel.

This year's *Annual Report* highlights the success of the Posse model through the students and individuals who make the program work.

# contents

- 2 Mission, Concept, Goals
- 4 Letter from the President + Founder and Chair
- 7 College + University Partners
- 9 Career Partners
- 10 Program Components
- 20 Highlights
- 22 City Reports
- 30 Contributors
- 42 Gala
- 44 Financials
- 48 Board + Staff



## mission

Posse started in 1989 because of one student who said, “I never would have dropped out of college if I had my posse with me.” The Posse Foundation identifies public high school students with extraordinary academic and leadership potential who may be overlooked by traditional college selection processes. The Foundation extends to these students the opportunity to pursue personal and academic excellence by placing them in supportive, multicultural teams—Posses—of 10 students. The Foundation’s partner universities and colleges award Posse Scholars four-year, full-tuition leadership scholarships.

## concept

The concept of a Posse works for both students and college campuses and is rooted in the belief that a small, diverse group of talented students—a Posse—carefully selected and trained, can serve as a catalyst for increased individual and community development. As the United States becomes an increasingly multicultural society, Posse believes that the leaders of this new century should reflect the country’s rich demographic mix and that the key to a promising future for our nation rests on the ability of strong leaders from diverse backgrounds to develop consensus solutions to complex social problems. One of the primary aims of the Posse program is to train these leaders of tomorrow.



# three goals



1

To expand the pool from which top colleges and universities can recruit outstanding young leaders from diverse backgrounds

2

To help these institutions build more interactive campus environments so they can become more welcoming for people from all backgrounds

3

To ensure that Posse Scholars persist in their academic studies and graduate so they can take on leadership positions in the workforce



dea

# r friends,

**P**osse's high school-through-college programming is among the most comprehensive of its kind in the United States. For more than two decades, Posse has helped thousands of talented students reach their highest potential. They are the most diverse group of young people one could imagine.

They come from Bed Stuy and Dorchester, the French Quarter and the South Side of Chicago. They grew up in Chinatown and East Los Angeles. They attended big public high schools with 5,000 students and small newly created charters. They participated in community-based organizations that serve the elderly, they helped new immigrants, they volunteered in soup kitchens, and they tutored their peers after school. They are Dominican, Filipino, Russian, Puerto Rican, Bosnian, Caribbean, African-American, Jewish, Pakistani, Japanese, Indian and Native American.

**They truly represent the diversity of this nation. And they are, without question, going to become the leaders of this country in every industry, occupation and profession.**

As doctors, lawyers, bankers and teachers they will be armed with the best education money can buy. They will also have the breadth and depth of life experience that will provide them with critical context when it is time to make decisions.

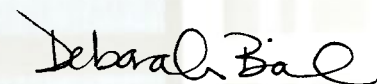
Eleven Posse graduates were recently highlighted in *The 2012 Posse Alumni Report*. The dean of a college, a Cannes Film Festival entrant, a plastic surgeon, and a college counselor were among those featured. This is what Posse is striving for: the development of a diverse and ambitious leadership network in the United States—one that can help lead the nation to invent and solve and challenge and dream.

**The Posse Foundation is recruiting, identifying, training and supporting these young leaders knowing that they will make a difference in the world.**

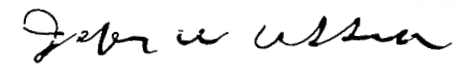
Posse's partner colleges and universities are investing in them with full-tuition scholarships and dedicated faculty and staff. Their commitment to and belief in these young people is extraordinary, and we thank them. We also thank the corporations, foundations, and individuals who help support and sustain the program. Without you, Posse would never have had such reach and impact.

These pages show you the process from the beginning when a young person is nominated, right through graduation. You will see the Dynamic Assessment Process, the Pre-Collegiate Training Program, the Campus Program and the Career Program—a little glimpse into the life of a Posse Scholar.

Warmly,



Deborah Bial, *President + Founder*



Jeffrey Ubben, *Chair*



Spring  
2008

Σ  
Λ  
Τ

1  
9  
8  
7

Class of  
2010



# college + university partners

The Posse Foundation would like to thank its college and university partners. This year, Posse partners awarded close to \$80 million in leadership scholarships to Posse Scholars across the country.

BABSON COLLEGE

BARD COLLEGE\*

BOSTON UNIVERSITY

BRANDEIS UNIVERSITY\*

BRYN MAWR COLLEGE\*

BUCKNELL UNIVERSITY\*\*

CARLETON COLLEGE

CENTRE COLLEGE

COLBY COLLEGE

THE COLLEGE OF WOOSTER

CONNECTICUT COLLEGE

DENISON UNIVERSITY\*

DEPAUW UNIVERSITY\*

DICKINSON COLLEGE\*

FRANKLIN & MARSHALL COLLEGE\*

GRINNELL COLLEGE\*

HAMILTON COLLEGE\*

KALAMAZOO COLLEGE

LAFAYETTE COLLEGE\*

LAWRENCE UNIVERSITY

MIDDLEBURY COLLEGE\*

MOUNT HOLYOKE COLLEGE

NORTHWESTERN UNIVERSITY

OBERLIN COLLEGE

PEPPERDINE UNIVERSITY

POMONA COLLEGE

SEWANEE: THE UNIVERSITY OF THE SOUTH

SYRACUSE UNIVERSITY\*\*

TEXAS A&M UNIVERSITY\*

TRINITY COLLEGE\*

TULANE UNIVERSITY\*

UNION COLLEGE

UNIVERSITY OF CALIFORNIA, BERKELEY

UNIVERSITY OF CALIFORNIA, LOS ANGELES

UNIVERSITY OF PENNSYLVANIA

UNIVERSITY OF SOUTHERN CALIFORNIA

THE UNIVERSITY OF TEXAS AT AUSTIN

UNIVERSITY OF WISCONSIN-MADISON\*\*\*

VANDERBILT UNIVERSITY

VASSAR COLLEGE

WHEATON COLLEGE

## GRADUATE SCHOOL PARTNERSHIPS

**Carnegie Mellon University**

Heinz College School of Public Policy and Management

Heinz College School of Information Systems and Management

**Johns Hopkins University**

Krieger School of Arts & Sciences

**Northeastern University**

College of Business Administration

**Northwestern University**

Kellogg School of Management

School of Law

**University of Washington**

College of Education

Evans School of Public Affairs

Information School

School of Social Work

\* Dual-city partners recruit Posses from two different program sites each year, awarding 20 Posse Scholarships annually.

\*\* Tri-city partners recruit Posses from three different program sites each year, awarding 30 Posse Scholarships annually.

\*\*\* Quad-city partners recruit Posses from four different program sites each year, awarding 40 Posse Scholarships annually.

*The list above reflects partnerships established through June 2012.*



# career partners

The Posse Foundation would like to thank its Career Program partners. These outstanding companies, organizations and institutions contribute to the growth and development of many Posse Scholars' careers.

826 Foundation-Boston	College Summit	The Hole in the Wall Gang Camps	MTV Networks Los Angeles	Southern California Edison
Academy for Urban School Leadership	Comedy Central	Home Box Office	The Museum of Contemporary Art	St. Luke's-Roosevelt Hospital Center
The Allstate Corporation	Conservation Law Foundation	Humanity In Action	National Association of Security Professionals	CARES Program
American Girl	CoSTAR	Illinois Tool Works	NBC Universal	STAPLES Center Foundation
American Liver Foundation, Greater LA Division	Creative Artists Agency	Infor	The Nielsen Company	State Street Corporation
Ameriprise	Credit Suisse	Initiative	Neuberger Berman	Story Corps
Asia Society	Crossroads for Kids, Inc.	Institute for Recruitment of Teachers	New England Aquarium	Student Conservation Association
The Associated Press	DC Public Library	Institute of Contemporary Art	New York City Bar Association	Suffolk Construction
Bank of America	DC Public Schools-Urban Ed. Leaders Intern Program	Institute of International Education	Noblis	Teach for America
Bingham McCutchen	Deloitte	Jones Lang LaSalle	Nordstrom	Thomson Reuters
Bloomberg L.P.	Demos and the American Project	JPMorgan Chase & Co.	Northwestern Center for Talent Development	Thompson Island Outward Bound
Blue Cross Blue Shield of Massachusetts	Discovery Communications, LLC	JWT	Northwestern Medical Facility Foundation	Time Inc.
Boston Lawyers Group	Double H Ranch	Kirkland & Ellis LLP	O'Melveny and Myers, LLP	Time Warner Inc.
Boston Museum of Science	Edelman	L + M Development Partners	Office of Council Member Tom LaBonge	The Travelers Companies, Inc.
Boston Teacher Residency	ESPN	LEK Consulting	Office of Senator John Kerry	True Value Company
Breakthrough Collaborative	Fidelity Investments	Legacy	Office of Senator Richard J. Durbin	Trust for Public Land
Burger King	Fiver Children's Foundation	Let's Get Ready	Old Mutual Asset Management	Tufts Sackler School of Biomedical Sciences
C5 Youth Foundation	Freddie Mac	Liberty Mutual	The Painted Turtle Camp	Turner Broadcasting System, Inc.
Calvert Investments	The Fresh Air Fund	Limited Brands	Paramount Pictures	Universal McCann
Camp of Dreams	Friends of the National Zoo	Lockton Insurance Brokers, Inc.	PBS	U.S. Equal Employment Opportunity
The Capital Group Companies	Friendship Public Charter School	Los Angeles Unified School District Ethics Office	Pearson + Penguin Group (USA)	Uncommon Schools
CARE USA	GAP, Inc.	Massachusetts General Hospital	Peer Health Exchange	Vanguard
CBS	Gay & Lesbian Alliance Against Defamation	MATCH Corps	Pepco Holdings Inc.	Viacom Media Networks
Center for Progressive Leadership	Golden Apple Foundation	Marathan Ventures Media Sales	Plymouth Rock Assurance Corporation	The Walt Disney Company
Chicago Committee for Minorities in Large Law Firms	Goldman, Sachs & Co.	Media Brands	PricewaterhouseCoopers	Weil, Gotshal & Manges LLP
Citi	Goodwin Procter LLP	MedStar	Princeton-Blairstown Center	West Monroe Partners
Citizen Schools, Inc.	Google	MFS Investment Management	Prudential Capital	William Blair & Company
City of New York, Department of Parks & Recreation	Harlem RBI	Midwest Academy	Putnam Investments	World Teach
City of New York, Office of the Mayor	Harlem United Community AIDS Center	Milbank, Tweed, Hadley & McCloy LLP	Reebok International, Ltd.	World Wide Workshop Foundation
City Year	Harvard Business School Summer Venture in Mgmt. Program	Molex	Royal Caribbean	
Clinton Global Initiative	Health Net, Inc.	Moody's Investors Service	Ryder	
	Hill, Holliday, Connors, Cosmopolus Inc.	Morgan Stanley	Sedgwick LLP	
		Morgan, Brown & Joy LLP		
		Mount Sinai School of Medicine		

*The list above reflects partnerships established through June 2012.*

# the posse program

The Posse Foundation achieves its goals through five program components:

- 1) Recruitment
- 2) Pre-Collegiate Training Program
- 3) Campus Program
- 4) Career Program
- 5) Posse Access

“Going to college has always been my dream, but my ambition was the only thing I had to get me there.”



**Karla Villalta**  
Posse Scholar (Miami)  
Mount Holyoke College

“I was extremely nervous throughout the Posse interviews because I felt like this was my only chance, my only ticket to college.

“I didn’t tell my mother anything about Posse until Christmas day when I told her I won the scholarship; I wanted to make sure I could give her good news. It was the best gift I could ever give her.”

Karla Villalta was born and raised in El Salvador. She came to the United States just two years ago and this fall will enroll at Mount Holyoke College as a member of its third Posse. Karla overcame leukemia at a young age and excelled despite the challenge of learning English and the stigma of being an ESL student. Now a senior at Alonzo and Tracy Mourning Senior High School in Miami, she is president of both the Mathematics Honor Society and the Engineering Society. She is also a member of the National Honor Society, a math tutor and a student ambassador, helping fellow international students adapt.

“I really discovered myself through the Posse interview process.”

“I learned that it’s important to be yourself no matter what, and that the things that I always thought were different about me in fact make me a leader. Posse helped me see that. Even as I prepare to begin college at Mount Holyoke, I still don’t believe that I’ve been given this opportunity. I know it’s real but it feels too big to grasp.

“My dream is to become an engineer. Not only will I be the first in my family to earn a college degree, but this is also my chance to make my life meaningful, memorable. I want to be better.”

## 1 Recruitment





From September to December each year, Posse conducts the Dynamic Assessment Process (DAP), a unique evaluation method designed to identify young leaders who might be missed by traditional admissions criteria but who can excel at selective colleges and universities. Using nontraditional forums to evaluate potential, DAP offers students an opportunity to demonstrate their intrinsic leadership abilities, their skill at working in a team setting and their motivation and desire to succeed. DAP has proven to be an extremely effective tool for identifying outstanding young leaders. Through a three-part process, including large-group and individual interviews, Posse staff and partner college and university administrators ultimately select a diverse group of 10 students for each institution, thus forming a Posse.



**“Posse continually serves as a model to me, demonstrating how to cultivate relationships and build community.”**

**M**ary O’Sullivan is the head guidance counselor at University Park Campus School, where she has worked for 10 of the 25 years she has been an educator. Five years ago, she nominated her first students for the Posse Scholarship.



**Mary O’Sullivan**  
Posse Nominator  
Head Guidance Counselor,  
University Park Campus High School,  
Massachusetts

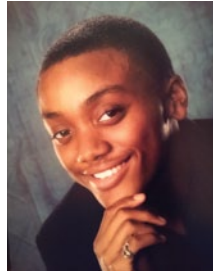
“When the flyer first came across the principal’s desk, we thought it was too good to be true, but we had to see it through. Since then, we’ve developed a whole program around Posse. I’ve trained every guidance counselor in the district on the Posse process and every school is now nominating.

“What’s really special about the Posse process is that it has a way of encouraging even the students who don’t win.

**“I’ve had so many students come back and say, ‘I didn’t get the scholarship but I had the time of my life. I met some amazing people and learned to see myself in a different light.’ That confidence is priceless.”**

“Over the last five years, 19 of our students have won the Posse Scholarship. My goal is to make sure that all of our schools have a winner and every student has a chance at this phenomenal opportunity. My hope for my students is that Posse and college provide them with experiences that change their lives.”

**“Posse for me means development. I feel like I’m walking into college a lot more prepared. I’m ahead of the game.”**



**Brandon Holden**  
Posse Scholar (D.C.)  
Bucknell University

**“T**he night of the final Posse interview I was really hoping I would get that call, but I was too nervous to stay up. When the phone rang, I was barely coherent. Some guy was asking me if I knew where I was going to college. I now know that ‘guy’ was Mark Davies, assistant vice president for enrollment, who said, ‘You’re going to Bucknell!’”

Brandon Holden is vice president of the Student Government Association at Benjamin Banneker Academic High

School and is also a youth health advocate, using performance art to increase HIV/AIDS, drug and violence awareness in youth ages 12–24. When he enrolls at Bucknell University this fall, he will begin exploring majors in pre-health professions and sociology.

“During the second workshop in Pre-Collegiate Training, we did an activity where we had to draw a picture to represent a personal ideology. I drew a picture to represent my support of gay marriage. It was a really powerful exercise.

**“Revealing our values really forced us to get passed the awkwardness of getting to know each other.”**

“It was encouraging to see how respectful we all were of one another even if we disagreed. I think that maturity and open-mindedness will serve us well.”

# 2

## Pre-Collegiate Training





From January to August of their senior year in high school, Posse Scholars meet weekly with staff trainers and their Posse peers for two-hour workshops. The Training Program consists of workshops that address four areas: 1) team building and group support, 2) cross-cultural communication, 3) leadership and becoming an active agent of change on campus and 4) academic excellence. The goal of the Training Program is to prepare Scholars for leadership roles on campus and for the high-level academic expectations of their colleges.



**“The whole concept of Posse resonates with me. The idea is revolutionary. Bringing young people together as a preformed, mini environment is a fantastic concept, and we now know that it works. College can be bewildering academically, socially and environmentally. Young people need support.”**

**F**or more than 25 years Ron Claiborne has served as a news anchor with ABC’s *World News with Diane Sawyer* and *Good Morning America*. As a volunteer writing coach with Posse’s New York chapter, he has worked one-on-one with newly selected Scholars as a part of Posse’s Pre-Collegiate Writing Program.



**Ron Claiborne**  
Posse Writing Coach  
News Anchor,  
*Good Morning America*

“In my experience as a writing coach, there have been several memorable moments when a concept or something that I’m trying to teach breaks through, and I see the Scholar’s face light up with understanding. Just watching them become better writers and build confidence in their abilities has been very rewarding.

**“Becoming involved with Posse was the perfect intersection of something that interested me and the opportunity to help young people.”**

“I hope that the students I have the privilege to work with become not just better writers, but also better thinkers.”

“Posse helped me identify the leadership qualities that I was sometimes unsure of and reaffirmed for me the significance of my potential as a student and as someone who has the capacity to give back to the world.”



**Brandon LaBord**  
Posse Scholar (Atlanta)  
Bard College

**B**randon LaBord is a junior at Bard College majoring in sociology. He is president of both the Black Student Organization and the Trustee Leader Scholar Program (TLSP), a community service organization. Through TLSP Brandon founded Building Up Hudson, which provides academic and interpersonal enrichment to middle school students in the community surrounding Bard.

“I went to one of the lowest-rated public high schools in Atlanta. I knew that I wasn’t in the right environment to reach my fullest potential, but I always knew I was a leader. Because of Posse I can sit in a classroom with peers who went to top private schools and yet feel confident.

“Part of the beauty of having a Posse is that although you may not always need their support, you know it’s always there—add to that the generosity and encouragement of your mentor.”

“People search for this kind of reassurance their entire lives, and knowing that I have it in college, one of the most unpredictable times in my life, means the world to me.”

# 3

## Campus Program







The Campus Program works to ensure the retention of Posse Scholars and to increase the impact of Posse on campus. Posse staff members visit each university four times a year for meetings with Posse Scholars, campus liaisons and mentors. Each mentor meets weekly with the Posse as a team and with individual Scholars every two weeks during the first two years in college. In addition, Posse facilitates an annual weekend-long PossePlus Retreat attended by members of the larger student body, faculty and administration with the goal of discussing an important campus issue identified by Posse Scholars.

**“When the director of admissions nominated me to be the first USC Posse mentor, it was the first I had heard of the organization. I looked into Posse and found that its values were my values.”**

**A** native of Los Angeles, George Sanchez has been a professor for 34 years, 15 of which he has spent at University of Southern California. He has dedicated his career to improving the success of first-generation students and underrepresented minorities. He works to ensure that Posse Scholars are well supported.



**George Sanchez**  
Posse Mentor  
Vice Dean for  
Diversity and Strategic  
Initiatives, University of  
Southern California

“I can recall giving the Scholars an assignment to pick a course for the following semester that they were sure they would love, regardless of what requirements it might fulfill. Many of the Scholars bear a heavy burden of what this experience means in terms of being able to provide for their families or what career opportunities they’ll have. I wanted them to prioritize finding joy in their classes. For a lot of them it set them on a different path—they changed their intended majors or discovered new passions and interests.

“My experience as a mentor has been incredibly fulfilling. There have been so many times when I felt I learned as much from Posse Scholars as they did from me. From the moment I met these students I realized how special they were and how excited they were to go on this journey together.

**“They are a powerful group that really wants to make a difference at USC and in the world.”**

“To talk with them about their hopes and aspirations and to see the college through their eyes has been a real joy and privilege.”



**“The Posse Career Program has been vital to my professional growth.”**



**Jeyson Florez**  
Posse Alumnus  
(Chicago)  
DePauw University  
Federal Strategy &  
Operations Consultant,  
Deloitte

**J**eyson Florez is a federal strategy and operations consultant with Deloitte Consulting in Washington, D.C. As the Recruiting Committee lead for Deloitte’s Career partnership with The Posse Foundation, he is blazing a trail for fellow Scholars and alumni to follow.

“My first internship through the Career Program was with PricewaterhouseCoopers. There I learned what it’s like to be at a big firm and developed my research skills. Following my junior year at DePauw University, I worked for U.S. Senator Richard Durbin, another Posse Career

Program partner, where I learned about constituents’ concerns and how to respond to their inquiries.”

Jeyson graduated from DePauw University in 2007 with a bachelor’s degree in economics and minor in Latin American studies. He traveled to Costa Rica as a Fulbright Scholar to research economic policies and income disparities. Following his Fulbright experience, Jeyson worked as an organizing fellow for President Obama’s presidential campaign on Native American reservations in northern Wisconsin and went on to earn a master’s in public administration at the University of Washington’s Evans School of Public Affairs as a recipient of a Posse Graduate Fellowship. He is an active member of Posse’s National Alumni Advisory Council and has mentored numerous Posse Scholars.

**“The biggest thing the Career Program did for me was give me the confidence to aim high. I felt prepared to network, interview, and excel in all my work experiences.”**

“I meet Scholars and recent alum that have been shaped by the Career Program, and I can only smile, knowing they are receiving the support they need to be successful in the workforce.”

# 4 Career Program





The Career Program supports Posse Scholars as they transition from being leaders on campus to becoming leaders in the workforce. Posse plays an integral role in the professional development of these young people by providing them with the tools and opportunities necessary to secure highly competitive, career-enhancing internships and jobs. One of the ways Posse achieves this is by partnering with exceptional companies and organizations, both nationally and abroad. The Career Program has three core components: 1) The Internship Program, 2) Career Counseling Services and 3) The Alumni Network.

**“At Bank of America Merrill Lynch, we spend an enormous amount of time on talent management, leadership and diversity, and so we’re thrilled to partner with Posse in these efforts.”**

**“W**e’re excited to have offered 14 summer internships to Posse Scholars last summer,” says Alastair Borthwick, managing director and co-head of Global Capital Markets at Bank of America Merrill Lynch. A member of Posse’s National Board of Directors, Alastair has helped spearhead an incredible partnership between The Posse Foundation and Bank of America Merrill Lynch that is providing valuable career opportunities to Scholars and alumni.

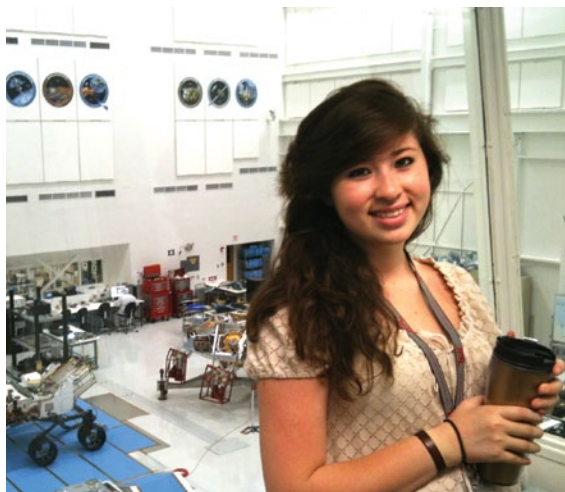


**Alastair Borthwick**  
Posse Board Member  
Managing Director  
and Co-Head Global  
Capital Markets, Bank  
of America Merrill Lynch

**“We look forward to continuing to offer internship opportunities to outstanding Posse Scholars and to hiring alumni into full-time positions.”**

In addition to hiring 14 Posse interns in the summer of 2011, Bank of America Merrill Lynch hosted Posse’s annual Liaisons Conference, a convening of Posse partner college and university administrators; facilitated professional development workshops for Posse Scholars; and made significant financial contributions to The Posse Foundation.

The support of companies and organizations like Bank of America Merrill Lynch is a critical component of Posse’s approach to preparing the next generation of leaders.



“There is so much more to Posse than matriculating 10 Scholars each year. From a recruitment and enrollment perspective, our membership with Posse gives us access to hundreds of fascinating students in nine major metropolitan markets around the United States through Posse Access.”



**Eric Staab**  
Kalamazoo College,  
Dean of Admission and  
Financial Aid

**E**ric Staab is Dean of Admission and Financial Aid at Kalamazoo College, a Posse partner institution since 2008. Under Eric’s stewardship of the program, Kalamazoo has admitted 41 Posse Scholars from Los Angeles, awarding them close to \$6 million in full-tuition, four-year leadership scholarships.

Through Posse Access, Posse partner institutions like Kalamazoo are extending their reach, connecting a greater number of talented students to a first-rate college education.

“This year we received 25 applications as a result of using Posse Access and matriculated 7 of those students.”

“We plan to continue using Posse Access in the years to come because we see the value that these students bring to our campus.”

# 5 Posse Access



Posse Access is an online database designed to give Posse partner colleges and universities exclusive access to unselected student nominees to consider for regular admission. Through Posse Access, the hundreds of finalists nationwide who are not selected can opt to have their application profiles made available to each of Posse’s partner institutions. By identifying candidates through the Posse Access database, partner schools benefit from Posse’s holistic approach to evaluating student potential and see a much greater pool of highly qualified students.



---

“We all know what a difference a Posse Scholarship can make to students and their families and to the receiving colleges, but we in the City of Boston gain much also.”



**Thomas Menino**  
Mayor, City of Boston

“**W**e are so fortunate that so many Posse alums choose to live in Boston, and our city is all the richer for it. Posse alums are engaged, civic-minded citizens who appreciate the value of giving back.”

Thomas Menino is the Mayor of Boston, which in 1999 became the site of the second Posse chapter. Each year, Mayor Menino hosts a breakfast for new Posse Scholars, and he currently employs two Posse alumni in his office.

---

“Posse has changed the lives of many Miami-Dade County Public Schools students—oftentimes the first in their families to go to college—by offering them hope and opportunity.”

“**I**t is a program that exemplifies the true meaning of community partnership. It recognizes students with potential and rewards them with a fully-paid college experience at a prestigious university. The students are challenged academically and given the necessary support to become successful. The Posse program is definitely expanding opportunities for deserving youth in Miami and its other city sites.”



**Alberto Carvalho**  
Superintendent for  
Miami-Dade Public  
Schools

Alberto Carvalho is the superintendent for Miami-Dade Public Schools, the nation’s fourth-largest school district. In 2009 he welcomed The Posse Foundation to the city of Miami.

# 2011 highlights

**A. POSSE OPENS ITS EIGHTH CHAPTER IN NEW ORLEANS**

with Bard College and Tulane University as its first partner institutions. At the 2011 Posse Annual Gala, Posse supporters pledge a remarkable \$500,000 to fund the launch of the new site.

**B. NORTHWESTERN UNIVERSITY SIGNS ON to recruit students from Los Angeles and SYRACUSE UNIVERSITY SIGNS ON AS A TRI-CITY PARTNER,**

recruiting Scholars from Atlanta, Los Angeles and Miami.

**C. BARD COLLEGE, BRANDEIS UNIVERSITY, FRANKLIN & MARSHALL COLLEGE, MIDDLEBURY COLLEGE, TULANE UNIVERSITY AND UNIVERSITY OF WISCONSIN-MADISON EXPAND**

to recruit Posses from additional sites.

**D. From a pool of more than 14,000 nominees, 572 NEW POSSE SCHOLARS ACROSS THE COUNTRY WIN \$80 MILLION**

in four-year, full-tuition leadership scholarships from Posse's partner colleges and universities.

**E. HUNDREDS OF POSSE SCHOLARS ACROSS THE COUNTRY GRADUATE**

from partner colleges and universities, bringing Posse's national alumni network to over 1,500 members.

**F. THE 2011 POSSE ANNUAL GALA, AN EVENING OF STARS, RAISES \$2 MILLION**

to support Posse's work and honors Hamilton College President Joan Hinde Stewart, Stephanie and Arthur Blank of the Arthur M. Blank Family Foundation, Putnam Investments with President and CEO Robert Reynolds accepting the award, and DePauw Posse 3 (Chicago) alumnus Jeyson Florez, who is a Fulbright Scholar and federal strategy consultant at Deloitte.

**G. OVER 2,500 PARTICIPANTS**

at 36 colleges and universities come together for the **2011 POSSEPLUS RETREATS, "THE MILLENNIALS: WHAT'S ON YOUR MIND?"** Following the retreats, 90 percent of participants say they engaged in conversations that they otherwise may not have had on campus, and each participant pledges to make a particular contribution to their community and to the world at large.

**H. THE 2011 AINSLIE ALUMNI ACHIEVEMENT AWARD IS GIVEN TO VANDERBILT POSSE 3 ALUMNUS MASON RICHARDS,**

whose 2011 film *The Seawall* was accepted into the Cannes Film Festival. The award is presented at the Annual Alumni Leadership Conference, attended by nearly 150 Posse alumni in New York City.



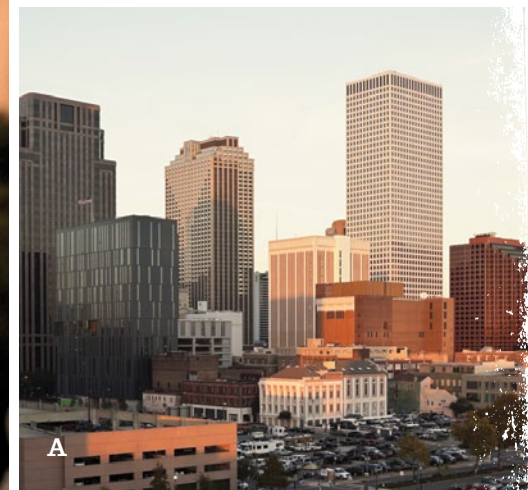
E



G



H



A



F



D



---

## city report: ATLANTA

**partners:** BARD COLLEGE, BOSTON UNIVERSITY, BRANDEIS UNIVERSITY, THE COLLEGE OF WOOSTER, SYRACUSE UNIVERSITY, TEXAS A&M UNIVERSITY

**year established:** 2007

**nominations:** 820

**nominators:** 45 high schools and 45 community-based organizations

**scholarship dollars awarded by partner colleges + universities:** \$7 million

**student highlight:** Wooster Posse Scholar Sage Nenyue received a grant from the Henry J. Copeland Fund for Independent Study to travel to South Korea to conduct research for *The Aquarian Millennial*, a digital magazine he founded.

**event highlight:** Atlanta's Power of 10 event raised \$260,000 and honored Ann Cramer, IBM director Americas for corporate citizenship & corporate affairs.

**career program highlights:** More than 80 Scholars and guests, including representatives from 15 Posse Career partners, attended Atlanta's Winter Career Day and networking reception. Additionally, Deloitte hosted 40 Scholars in training for Deloitte Impact Day, which featured intensive workshops on leadership training. Posse Atlanta also welcomed five new Career partners: Atlanta Education Fund, Breakthrough Atlanta, C5 Youth Foundation, CARE USA, and Infor.

*At left: Wooster Posse Scholar Sage Nenyue (left) with fellow Posse member.*





---

## city report: BOSTON

**partners:** BRYN MAWR COLLEGE, BUCKNELL UNIVERSITY, CENTRE COLLEGE, DENISON UNIVERSITY, HAMILTON COLLEGE, UNION COLLEGE

**year established:** 1999

**nominations:** 1,336

**nominators:** 83 high schools and 78 community-based organizations

**scholarship dollars awarded by partner colleges + universities:** \$8 million

**student highlight:** Denison University Posse Scholar Shavely Peralta was one of just seven graduating students to receive the University's President's Medal, the highest honor bestowed on a student and given to those who succeed academically and make a lasting impact on campus. Among her many roles, Shavely was student government vice president, a member of the campus governance association, an interviewer for the Denison admissions office and a campus coordinator for Teach for America.

**event highlight:** Posse Boston's third annual Power of 10 event was the most successful in the site's history, raising over \$190,000 and welcoming more than 300 guests.

**career program highlights:** In 2011, Boston placed over 100 Scholars in internships and full-time job opportunities and held eight Career Program events including the annual Career Day hosted by Fidelity Investments. Boston also welcomed 12 new Career partners: 826 Foundation, Ameriprise, Bank of America, Boston Teacher's Residency, L.E.K. Consulting, Liberty Mutual, MATCH Corps, Museum of Fine Arts, New England Aquarium, The Office of Senator John Kerry, Thompson Island, and WGBH.

*At left: Denison Posse Scholar Shavely Peralta (second row, left).*

---

# city report: CHICAGO

**partners:** CARLETON COLLEGE, CONNECTICUT COLLEGE, DENISON UNIVERSITY, DEPAUW UNIVERSITY, MIDDLEBURY COLLEGE, OBERLIN COLLEGE, POMONA COLLEGE, TRINITY COLLEGE, UNIVERSITY OF WISCONSIN-MADISON

**year established:** 2000

**nominations:** 2,691

**nominators:** 131 high schools and 112 community-based organizations

**scholarship dollars awarded by partner colleges + universities:** \$13 million

**student highlight:** Trinity Posse Scholar Margaret Nolan interned in the White House Office of the Vice President's Chief of Staff. She also had the opportunity to work on specific policy issues through the U.S. Department of Justice's Office on Violence Against Women.

**event highlight:** Posse Chicago's two major annual fundraisers—the Golf Outing and Power of 10 event, which honored Cambium LLC President Michelle L. Collins—jointly raised just under \$500,000, making both events the most successful to date.

**career program highlights:** Illinois Tool Works, Sedgwick LLP and True Value Company became the newest Career partners. Posse Chicago also hosted several successful events, including a Winter Career Day hosted by Kirkland & Ellis LLP and an Internship Celebration sponsored by partners Edelman and the Museum of Contemporary Art. Additionally, Posse Chicago helped connect more than 100 Scholars to opportunities with its Career partners.

*At right: Trinity Posse Scholar Margaret Nolan.*



---

# city report: D.C.

**partners:** BUCKNELL UNIVERSITY, GRINNELL COLLEGE, LAFAYETTE COLLEGE, PEPPERDINE UNIVERSITY, SEWANEE: THE UNIVERSITY OF THE SOUTH, UNIVERSITY OF WISCONSIN-MADISON

**year established:** 2004

**nominations:** 1,575

**nominators:** 94 high schools and 53 community-based organizations

**scholarship dollars awarded by partner colleges + universities:** \$9 million

**student highlight:** Bucknell Posse Scholar Nadia Sasso was awarded a \$10,000 Davis Projects for Peace Award with which she founded Yehri Wi Cry (Hear Our Cry), an organization that seeks to provide proper child birthing, prenatal and infant care products for women in Sierra Leone.

**event highlight:** Posse D.C.'s Power of 10 event welcomed more than 180 guests and raised \$128,000, representing a 70 percent increase from 2010. The event honored Barbara Harman, director of the Harman Family Foundation and president and editor of the *Catalogue for Philanthropy: Greater Washington*.

**career program highlights:** D.C. held several successful Career events for Scholars and alumni, including an exclusive tour of the CNN Washington Bureau offices with lead anchor Wolf Blitzer and the annual Internship Celebration with special guest speaker Holly Loiseau from Career partner Weil, Gotshal & Manges LLP. In addition, Friendship Schools signed on as a new partner, providing internship opportunities to six Scholars.

*At right: Bucknell Posse Scholar Nadia Sasso (center).*





---

## city report: LOS ANGELES

**partners:** BUCKNELL UNIVERSITY, DICKINSON COLLEGE, GRINNELL COLLEGE, KALAMAZOO COLLEGE, NORTHWESTERN UNIVERSITY, SYRACUSE UNIVERSITY, TULANE UNIVERSITY, UNIVERSITY OF CALIFORNIA, BERKELEY, UNIVERSITY OF CALIFORNIA, LOS ANGELES, UNIVERSITY OF WISCONSIN - MADISON

**year established:** 2002

**nominations:** 2,404

**nominators:** 138 high schools and 64 community-based organizations

**scholarship dollars awarded by partner colleges + universities:** \$12 million

**student highlight:** University of Wisconsin-Madison Posse Scholar Eddie Espinoza traveled to Nejapa, El Salvador with the UW chapter of Engineers Without Borders to help alleviate the town's water contamination problem. While in Nejapa, he helped build a new wastewater treatment plant, taught locals about water safety and became the project's official liaison to the city as a translator to the mayor and supply providers.

**event highlight:** Posse Los Angeles raised over \$352,000 at its second annual Power of 10. The event honored former Los Angeles Mayor, Honorable Richard J. Riordan, who contributed a generous gift of \$100,000.

**career highlight:** Each member of Bucknell Posse 1, the inaugural Civic Engagement Posse, had exciting summer internship experiences with the following organizations: Clergy and Laity United for Economic Justice, Coalition for Human Immigration Rights of Los Angeles, Los Angeles Alliance for New Economy, National Day Laborer Organization Network and UCLA Downtown Labor Center.

*At left: Wisconsin Posse Scholar Eddie Espinoza.*



---

## city report: MIAMI

**partners:** FRANKLIN & MARSHALL COLLEGE, HAMILTON COLLEGE, MOUNT HOLYOKE COLLEGE, SYRACUSE UNIVERSITY, UNIVERSITY OF PENNSYLVANIA

**year established:** 2009

**nominations:** 1,126

**nominators:** 54 high schools and 20 community-based organizations

**scholarship dollars awarded by partner colleges + universities:** \$7 million

**student highlight:** Hamilton Posse Scholar Anthony Jackson has become tremendously involved in Hamilton's campus community, taking on several important leadership positions. As a Student Assembly class representative, he is one of only two students on the Committee on First Year Experience and is also a co-founder of the Philanthropy Committee, which raises money for various Hamilton-sponsored causes, including a tutoring program for local high school students. He is also a member of the Sadov Student Center Programming Board, the Library Student Advisory Board, the Voice of Color Lecture Series and the Campus Activities Board.

**event highlight:** Posse Miami's second Power of 10 event raised over \$78,000 and was sponsored by Berger Singerman, Greenberg Traurig, KPMG, Royal Caribbean, Sedgwick Law, and Ver Ploeg & Lumpkin.

**career highlight:** Career partners Burger King Corporation, Discovery Latin America, Ladenburg Thalman & Company and Ryder Corporation provided summer internship opportunities to 27 Posse Miami Scholars.

*At left: Hamilton Posse Scholar Anthony Jackson (back row, center).*

---

# city report: NEW ORLEANS

**partners:** BARD COLLEGE, TULANE UNIVERSITY

**year established:** 2011

**nominations:** 656

**nominators:** 35 high schools and 19 community-based organizations

**scholarship dollars awarded by partner colleges + universities:**  
\$3 million

**student highlight:** Troy Robertson, a senior at Helen Cox High School in Harvey, Louisiana, became one of the first 10 Scholars from New Orleans selected to attend Bard College this fall. As senior class president and a Crime Stoppers ambassador, Troy obtained a highly coveted internship at Smith & Fawer LLC, a law firm that specializes in complex civil, criminal, and commercial work throughout the Gulf South. His experience as an intern assisting in legal research has strengthened his desire to study law.

**event highlight:** In addition to honoring Posse supporters and partner institutions, the 2011 Posse Gala held on May 25 in New York City raised \$2 million, a significant portion of which was donated during a special Dutch auction to support the launch of Posse New Orleans. Fred McAfee, former star running back for the New Orleans Saints, helped welcome Posse to The Big Easy by presenting NFL tickets and memorabilia to the evening's highest donors.

*At right: Bard Posse Scholar Troy Robertson and his parents.*



---

# city report: NEW YORK

**partners:** BABSON COLLEGE, BRANDEIS UNIVERSITY, COLBY COLLEGE, DEPAUW UNIVERSITY, DICKINSON COLLEGE, FRANKLIN & MARSHALL COLLEGE, LAFAYETTE COLLEGE, LAWRENCE UNIVERSITY, MIDDLEBURY COLLEGE, TRINITY COLLEGE, UNIVERSITY OF SOUTHERN CALIFORNIA, UNIVERSITY OF WISCONSIN-MADISON, VANDERBILT UNIVERSITY, VASSAR COLLEGE, WHEATON COLLEGE

**year established:** 1989

**nominations:** 3,382

**nominators:** 358 high schools and 100 community-based organizations

**scholarship dollars awarded by partner colleges + universities:** \$20 million

**student highlight:** Brandeis Science Posse Scholar Angel Garcia, a neuroscience and biology double major, worked as a lab technician on stem cell migration and bio-fuel research at the University of Utah and Massachusetts Institute of Technology, respectively. He also spent the summer in East Timor in southeast Asia volunteering with a team of 50 Timorese staff to provide medical care to patients at a local clinic.

**career highlight:** Posse New York welcomed seven new Career partners: American Legacy Foundation, American Museum of Natural History, Clinton Global Initiative, Cool Culture, Dēmos and The American Prospect, J. Walter Thompson and L+M Development Partners. New York also helped facilitate summer internship opportunities for nearly 300 Posse Scholars and hosted six successful Career events, including a Study and Work Abroad with Fulbright session and a Careers in Medicine Panel led by Vanderbilt Posse alumna Erica Spatz, M.D., and other doctors.

*At right: Brandeis Science Posse Scholar Angel Garcia.*



# 2011 contributors

The Posse Foundation could not exist without the incredible generosity of its donors. Your support has allowed thousands of urban students to shine in college and lead in the workforce. Together we are helping to build a dynamic network of critical thinkers and engaged citizens—stewards of our nation's future. We thank you for the powerful difference you are making in the country and in the lives of so many talented young people.

## Architects

(\$1 million+)

Garrett and Mary Moran  
Laurie and Jeff Ubben

## Agents of Change

(\$250,000-\$499,999)

Anson & Debra Beard, Jr.  
Office of the State Superintendent of Education

## Innovators

(\$100,000-\$249,999)

Anonymous  
Barclays Capital  
The Boston Foundation  
The Brown Foundation, Inc.  
Citi Foundation  
Christie and Anthony de Nicola  
The Eisner Foundation  
Gap Foundation  
Google Inc. Charitable Giving Fund of Tides Foundation  
Houston Endowment, Inc.  
The Kresge Foundation  
Lone Pine Foundation  
The Riordan Foundation  
Ali and Brad Singer  
State Street Corporation  
Sharon & Timothy H. Ubben and The Ubben Foundation

## Leaders

(\$50,000-\$99,999)

Anonymous (2)  
Allscripts  
Altman Foundation  
Alastair and Jeanine Borthwick  
The Morris and Gwendolyn Cafritz Foundation  
The Capital Group Companies Charitable Foundation  
The Capital Group Companies CEDAR Foundation  
Crown Family Philanthropies  
Darden Restaurants, Inc. Foundation  
Deloitte LLP  
Freddie Mac Foundation  
The Hellman Family Foundation  
David G. Kabiller  
John S. and James L. Knight Foundation  
The MARPAT Foundation  
Anna and Mason Morfit  
Morgan Stanley Foundation  
The New World Foundation

Old Mutual Asset Management  
Karin and Phillip Pead  
Polk Bros. Foundation  
Putnam Investments  
Redlich Horwitz Foundation  
Time Warner Inc.  
The Travelers Companies, Inc.  
Tsunami Foundation - Anson M. Beard, Jr. and Family  
USA Funds  
The Robert W. Woodruff Foundation

## Benefactors

(\$25,000-\$49,999)

The Achelis Foundation  
Affiliated Managers Group, Inc.  
Bank of America Merrill Lynch  
Bloomberg  
BlueCross BlueShield of Illinois  
The Brinson Foundation  
Chicago White Sox Community Fund, a fund of the McCormick Foundation  
College Assistance Program, Inc.  
Michelle L. Collins  
D & R Fund  
The Walt Disney Studios  
R. Howard Dobbs, Jr. Foundation  
The Joseph Drown Foundation  
Equifax Foundation  
Excellence in Investing for Children's Causes, Inc.  
Exelon  
Colleen and Richard Fain  
The Family Alliance Foundation  
The Florida Department of Education  
The Fortin Foundation of Florida, Inc.  
Lloyd A. Fry Foundation  
J. B. Fuqua Foundation  
Michele Ganeless  
The Rosalinde and Arthur Gilbert Foundation  
Goldman, Sachs & Co.  
Kelly Granat and Susan Boland  
Pamela and George F. Hamel, Jr.  
Inavale Foundation, Inc.  
ING Foundation  
Karsch Capital Management LP  
Susan and Richard Kiphart  
Kirkland & Ellis LLP  
Steven Lefkowitz - CI Capital Partners LLC  
Liberty Mutual Foundation  
Lynch Foundation  
Denise and Eric Macey  
Paula and Tom McInerney  
Barbara and Richard Metzler  
Misis Plc  
Molex

Mr. and Mrs. Mark A. Moore  
Morgan Stanley  
The MRB Foundation  
MTV Networks  
The Nielsen Company  
Osa Foundation  
Michael Peacock  
Christina and Jim Price and the Price Family Foundation

PwC  
The Rose Hills Foundation  
Rust Consulting  
Say Yes To Education Foundation/  
George Weiss Associates  
Southern California Edison  
Albert J. Speh, Jr. and Claire R. Speh Foundation  
James A. Star  
The Starr Foundation  
Robert K. Steel Family Foundation  
F. Chapman Taylor and Grace Boey Taylor  
Thomson Reuters  
Wachovia Wells Fargo Foundation  
Webber Family Foundation  
Sandra and Ray Wirta  
Joe and Malin Wolf

## Partners

(\$15,000-\$24,999)

Anonymous (2)  
Lawson and Clint Allen  
Jaynee and Eric Beckman  
The Belk Foundation  
The Mary Alice and Bennett Brown Foundation, Inc.  
Bingham McCutchen LLP  
The Arthur M. Blank Family Foundation  
Blue Cross Blue Shield of Massachusetts  
The Brightwater Fund  
Clark Charitable Foundation  
The Coca-Cola Company  
Bonnie and Louis Cohen  
Evelyn and Stephen Colbert and the Colbert Family Fund of Coastal Community Foundation  
Credit Suisse  
DC Public Library  
Eastern Bank Charitable Foundation  
The O.P. & W.E. Edwards Foundation, Inc.  
Margaret and Martin Frederic Evans  
Kathy and Richard Fanslow  
Bev and Wade Fetzer  
Fidelity Investments  
Emily and Harold Ford, Jr.  
Gartner, Inc.  
Jean and John Hatfield



Home Depot Foundation  
Richard and Priscilla Hunt  
Stephanie and Tim Ingrassia  
International Flavors and Fragrances, Inc.  
Barbara and Ted Janulis  
Kathy and John Kissick  
Michael Kluger and Heidi Greene  
The Sartain Lanier Family Foundation, Inc.  
Leadership Greater Washington Class Fund  
Walter and Elizabeth Lohmann  
Connie and Bruce Macleod  
Christina and James Minnis  
The Moody's Foundation  
Pearson  
Christine and Paul Quistberg  
Thomas and Sheila Rabaut  
Marcia and Kevin Reilly  
The Rockdale Foundation, Inc.  
RosaMary Foundation  
Royal Caribbean Cruises Ltd.  
Jennifer Rusk, Bryn Mawr Posse 1  
(Boston) Alumna  
Susie Scher and Allison Grover  
Select Equity Group Foundation  
Maria and Paul Selian  
Susan and Gene Shanks  
Marree and John Townsend  
Edwin S. Webster Foundation  
Xerox Foundation

## Mentors

**(\$10,000-\$14,999)**

Suzanne and Michael L. Ainslie and The Ainslie Foundation, Inc.  
The Allstate Foundation  
Micky and Madeleine Arison Family Foundation  
Atlantic Philanthropies  
Bank of America Charitable Foundation Matching Gifts Program  
Robert and Jennifer Barrett  
Ambassador and Mrs. Frank E. Baxter  
Blum-Kovler Foundation  
Julie Bowden and Richard Grudzinski  
Brooks Automation, Inc.  
Liza Mae and Mark Carlin  
Judy and Russell L. Carson  
Chinh Chu and Ha Phuong  
Claneil Foundation, Inc.  
Michelle and Timothy Codrington  
Marc H. Cohen  
The Cosette Charitable Fund  
Chris and Travene Crawford  
Theodore Cross Family Charitable Foundation  
Crowell & Moring Foundation  
The Dalton Family Foundation

Ernst & Young LLP  
Dolores Eyer Fund  
Anne and William Farrell  
Beth and Rich Fentin  
Lise Strickler and Mark Gallogly  
Georgia-Pacific LLC  
Sheila Gold Foundation  
The Gould Family Foundation  
GreenbergTraurig  
The Ha Phuong Foundation  
The Harman Family Foundation  
Roy A. Hunt Foundation  
Illinois Tool Works Foundation  
JPMorgan Chase Foundation  
Eleni P. Kalisch  
Glynn D. Key  
King & Spalding LLP  
Latham & Watkins LLP  
Robert B. Levy & Bette Braun  
Milbank, Tweed, Hadley & McCloy LLP  
NAVTEQ Foundation  
Neuberger Berman Foundation  
Prince Charitable Trusts  
Paul and Wendy Raether  
REAM Foundation  
Reebok International, Ltd.  
Jason W. Reese  
David M. Riley  
Riordan, Lewis & Haden  
Deborah Ruosch Conrad and Will Conrad  
Ryder Charitable Foundation  
Catherine A. Saunders  
Frank Sesno and Kathy Sanderson  
Jennifer and Erich Tengelsen  
Marilyn and Lee Tenzer  
Steve Tisch  
The TJX Companies, Inc.  
Jean-Pierre L. Trouillot  
Turner Broadcasting System, Inc.  
UBS Financial Services  
Lisa and Mark Walsh  
Pam and Roger Weston

## Ambassadors

**(\$5,000-\$9,999)**

Anonymous (3)  
Ace Foundation  
Darcy and Jeffrey Ahl  
Alliant Credit Union Foundation  
Allstate Insurance Company  
Alston & Bird LLP  
American Express Company  
Ares Management LLC  
Trish and Chris Arnold  
Pamela and Brian Barefoot

Berger Singerman  
Frances Bermanzohn and Alan Roseman  
Carol Bernick  
BlackRock, Inc.  
Wayne and Jacqueline Budd  
Butler Family Foundation  
Camp-Younts Foundation  
Nora and Jack Capers  
Citi  
The College Board  
Con Edison  
William E. Cook, Jr.  
Marjorie and Scott Cowen  
Creative Artists Agency  
Dorothy and James Currie  
Dechert LLP  
Feroz and Erica Dewan  
Hester Diamond  
Helen W. Donovan  
Dr. Scholl Foundation  
Arthur Dubow Foundation  
Katharine and Bill Duhamel  
Sabrina R. Ferris, Esq.  
John and Mary Franklin Foundation, Inc.  
Steven Ganeless  
Michael and Meg Gibson Revord  
Miles R. Gilburne  
The Jack & Anne Glenn Charitable Foundation  
Jonathan Glickman  
The Andrew Goodman Foundation  
Guardsmark, LLC.  
Hamilton College  
The Hauptman Family Foundation  
Noreen and Doug Herzog  
Corina Higginson Trust  
Charles and Ann Johnson Foundation  
Carol and Edward Kaplan  
Kimberly and Sean Klimczak  
KPMG LLP  
Krames Staywell  
Robin and David Kranich  
Kutnick Foundation  
John Latham  
Lazard Frères & Co. LLC  
The Ray M. & Mary Elizabeth Lee Foundation, Inc.  
Sheri and Edward Leonard  
Lionsgate Entertainment Company  
Roxanne and Rocco Martino  
James Owen Mathews  
Mattel, Inc.  
MAXIMUS Foundation  
Steven Moskowitz  
Camille Mosley  
Joanne and David Mullen  
Nellie Mae Education Foundation  
Noblis, Inc.

The Mary Norris Preyer Fund  
Novack and Macey LLP  
Jim and Rosemary O'Neill  
The Overbrook Foundation  
Mr. and Mrs. Joseph M. Paresky  
Elizabeth and Jason Perkins  
Perlman Family Foundation  
Debbie and John Phillips  
Heather and Jim Pigott  
Roland S. Pritchett  
The Prologis Foundation  
Libby and Paul Quiner  
Mary and John Raitt  
Kathy and Robert Rene  
Ressler/Gertz Family Foundation  
Larry Robbins  
Rachel and John Rodin  
The Rogers Foundation  
Art Rollins  
John and Jeanne Rowe  
May and Samuel Rudin Family Foundation, Inc.  
Peggy and Henry Schleiff  
Schoenberg Family Foundation  
Sandra and Ronald Schutz  
Jane and Paul Shang  
Spencer Stuart  
Robert and Penelope Steiner  
The Streisand Foundation  
Tennenbaum Capital Partners, LLC  
Emily and David Tobin  
United Way of the National Capital Area  
Venable Foundation, Inc.  
Ver Ploeg & Lumpkin, P.A.  
Mary and Rajneesh Vig  
Sukey Wagner  
Wells Fargo Foundation  
Wells Fargo Good Works  
The Westport Foundation  
John G. White  
William Blair & Company Foundation  
Pete and Tammy Wissinger

## Friends

**(\$1,000-\$4,999)**

Anonymous (6)  
36 Foundation, Inc.  
Boucie Addison  
Rod and Maggie Adams  
The Agora Group, Inc.  
Sanford and Miriam Ain  
Akerman Senterfitt  
Mona and Andrew Albert  
Randall Allen  
Alex Amezcua  
John Andelin and Virginia Geoffrey

Colin and Melody Anderson  
Daniel and Jaime Andriano  
The Aquidneck Foundation  
Stefanie Lally-Ardrey and James Ardrey, Jr.  
Maya Arison  
Nelly Arougheti and Michael Arougheti  
ASGK Public Strategies  
Doris and Laurence Ashkin  
Cathy Atkins  
Lawrence Austin  
Thomas D. Avazian  
Avison Young  
Robin K. Aviv  
Ned and Elizabeth Bacon  
Baird Foundation  
Pamela and Jesse Baker  
Charlene S. Barrett  
Bartlett Family Fund  
Charles and Christina Bascom  
Alvin H. Baum Family Fund  
The Batir Foundation  
Veronica and Anson H. Beard  
Susan R. Bell  
BenchMark Management  
Robbie Oxnard Bent and David Bent  
Debbie and Theodore Berghorst  
Marc Bernstein  
Keri and Ronald Bernstein  
Scott Bessent  
Deborah Bial and Bob Herbert  
Kathy and Jerry Biederman  
Sally and Walter Bissell  
Mr. David K. Black and Kelsey K. Black  
The John N. Blackman Sr. Foundation  
Glenn Blackmon  
Besse Johnson & George Blanton Allen Memorial Foundation  
Suzanne and James Blomberg  
Nancy and George Bodeen  
Mrs. Barbara C. Boger, Ed.D. and Dr. William P. Boger  
Sarah Greenwood and Joe Bondi  
Dorothy and Thomas Borders  
Suzanne and Ted Bosler  
Bottleneck Management LLC  
Elaine Bovaird  
Sapna and Brandon Boze  
Bradley Associates  
Daniel H. Bradley, Jr.  
Breakwater Investment Management  
Laura and John Brinckerhoff  
Donella Brockington  
Mary Jo Otsea and Richard Brown  
William Buffett and Susan Kennedy  
Bryan Burk  
Steve and Gretchen Burke

Laurie and Ryan Cahill  
Campus Explorer  
C. Christopher Cannon  
Canyon Partners, LLC  
Nelson and Michelle Carbonell Family Foundation  
Eva Marie Carney  
Lisa Carnoy  
Ronald G. Casty and the Ronald G. Casty  
Family Foundation  
CDW  
Celeste Center  
G. Michael Kenny  
Chicago Board of Trade Foundation  
Chicago Trading Company  
John Choi  
Anne Chwat  
Daniel Clivner  
The Coca-Cola Foundation  
Coface  
Coldwell Banker Residential Real Estate-CARES  
William T. Connolly  
Conway MacKenzie  
Jonathan and Loretta Cook  
Cooper Fabrics  
James W. Cooper  
Lewis S.W. Crampton  
John Cucci  
Francis Cueto  
Dana-Farber Cancer Institute  
Lise Scott and D. Ronald Daniel  
Kirk A. Davenport II  
Phil Davies  
Lorn C. Davis, CFA  
Judith and William Davis  
Ginny and Sean Day  
Ann R. Langdon and Drew S. Days III  
Kristin DeClark  
Brenda Lynn Deleo-Totaro  
Tamara and Jay Dempsey  
Roberta and Vince DiBlasi  
Shari and Mark Director  
DIRECTV, Inc.  
Azi Djazani  
Karl Domangue  
Robert Doran  
Robert and Anne Drapeau  
Bryan R. Dunn  
Charles Edel and Kira Moriah  
Pamela and Martin Edel  
Carla and Jay Edelston  
Frederick F. Eisenbiegler  
Lindsay and Henry Ellenbogen  
Claire Ellis and Chad Cooper  
Deborah and David Epstein

Ellen and Irving Epstein  
Brittain and Steven Ezzes  
Gary Fayard  
Tony Felzen  
The Ferraro Law Firm, P.A.  
The Fifteen Group Foundation  
Danah and Paul Fisher  
Mr. and Mrs. Brian D. Fitzgerald  
Thomas Flanagan  
Patricia White and Daniel Flatley  
Pat and Bob Flynn  
Graham B. Foster  
Mr. and Mrs. Bruce Freedman  
Gary and Patricia Wilson Fridley  
Ken Fulk Design and Ken Fulk/Kurt Wooton  
Eric J. Furda  
Lori and Simon Furie  
Linda and Wilbur Gantz  
Denise and Gary Gardner  
David Gassman  
Faith Gay  
John H. George  
John G. Gilkes  
Godfrey Gill  
Scott Glassberg  
Gleber Family Foundation  
The Glickenhau Foundation  
Jane and Amir Gold  
Katherine Goodman  
Google Matching Gifts Program  
Chris and Mary Beth Gordon  
David and Jennifer Graf  
Green Bay Packers  
Lois Perelson-Gross and Stewart Gross  
William Gross  
Ethan Grossman  
Joanna Grover-Watson and Olive Watson  
Paul and Sandy Hanna  
Carol and James Hansen  
Ann Craig Hanson and John Hanson  
Harlib Foundation  
Harman Cain Family Foundation  
Harris N.A.  
Dawn and Leon Harris  
Nan Harris  
David B. Harrison  
The Hearst Corporation  
Christopher Heffernan  
Heitman LLC  
Craig W. Henderson  
Clare Herington and Laurence Platt  
David Hermer  
Bob and Lori Holland  
Cathy MacNeil Hollinger and Mark Hollinger

Preston Hopson III  
Horwood Marcus & Berk Charitable Fund  
Host Hotels and Resorts  
Mr. James S. Hoyte and Ms. Norma Dinnall  
HSBC-North America  
Mendel W. Hui  
James Hurley  
Andrea and Lee Hutter  
IBM  
International Creative Management  
Melissa B. Ivey  
Elaine and Robert Jachino  
Valerie Ford Jacob  
Jenner & Block LLP  
Dan Jetter  
Sheree and Andrew Johnson  
Holly and Bruce Johnstone  
Paul Julius  
Amy and Marty Kaplan  
Bruce Karsh  
Barbara Kates-Garnick, PhD and  
Marc Garnick, MD  
Rachel and Mitch Katz  
Aidan M. Kehoe  
Angela Ortiz and Anik Khambhla  
Elizabeth and John Kilgallon  
John and Tappy Kimpel  
Mr. and Mrs. William J. Kirby  
HH & Gertrude Klein Foundation  
Peg and Larry Kolinski  
Rosemary Kotkowski  
Stephanie and James Kozak  
David Kreisman  
Shermin and J. Stuart Kruse  
Karin and David Kuhns  
Kurzman Family Fund  
Hebert Labbate  
LA-CO Industries  
Lois & Lucy Lampkin Foundation  
Douglas L. Land  
Benjamin Lap  
Larry Laque  
Theresa and John Larre  
Clint and Maria Lawrence  
Reginald Van Lee  
Thomas Lehrner  
Sam Sankar and Amanda Leiter  
Kathy and Paul Leone  
Robert and Cynthia Lepofsky  
Jaime Lester  
Michael Lestingi  
Russell P. Levine  
Elayne and Howard Levkowitz  
Terri and Barry Lind

Caroline H. Little and Dan Burton  
Karole Lloyd  
Anne and Kurt Locher  
Loop Capital Markets  
Louis and Virginia Clemente Foundation, Inc.  
Louis R. Lurie Foundation  
Anne and Edward Lyman  
Susan Lyne  
Annie and Douglas Mabie  
John D. and Catherine T. MacArthur Foundation  
Diana and David Mack  
Anne and Jim Magill  
Saif Mansour  
Barbara A. Manzollilo  
Marks Paneth & Shron LLP  
Maryann and Robert Marston  
Renee and William McCalmont  
Elissa McCarter  
Stephanie McClelland  
McCormick & Company, Inc.  
Stacey Hadash and Terry McDonnell  
Mark McKenna  
Brian McMahon  
MDRT Foundation  
Eduardo Medina  
Merrill Lynch  
Mesirow Financial Advanced Strategies  
Metro-Goldwyn-Mayer Studios Inc.  
Middlebury College  
Priscilla and Donald K. Miller  
Nancy and Philip Miller  
Nancy G. and Mark Mistretta  
Lane Murchison  
Michael and Debbie Murray  
Alan F. Myers  
Sherif and Mary Nada  
Cindy Stites and Don Nagle  
NASP Chicago  
Jonathan P. and Dorothy E. Nelson  
Monique L. Nelson, Vanderbilt Posse 3  
(New York) Alumna  
Craig Nerenberg  
Daniel Neuwirth  
The New Millennium Charitable Foundation  
Caroline Niemczyk  
Northwestern Mutual Financial Network  
Kevin O'Connell  
Jeanne and Richard Oelerich  
Sharon and Bill Oglesby  
Sandra Young and Peter O'Keefe  
Linda and Brian O'Toole  
Pacifcor LLC  
Marvin G. Padilla  
Peter Paoli

Paramount Pictures Corporation  
Sheryl Parker and James Grayer  
Gail Paster  
Diane and Deval L. Patrick  
Monica and James Pavlik  
Nancy and David Pearson  
Dr. and Mrs. Tiron C. Pechet and the Maurice  
Pechet Foundation  
Integrays Energy Group  
Carl E. Peoples  
Carl E. Peoples and Steven W. Nowak  
Perls Foundation  
Carla Peterson and David Rosenbloom  
Wendy Shattuck and Sam Plimpton  
Christine and Michael Pope  
Lydia and Richard Porter  
Steven Prediletto  
Robert O. Preyer  
Jimmy L. Price III  
D'Wayne Prieto, Vanderbilt Posse 8  
(New York) Alumnus  
Janet Prindle Seidler and Charlie Seidler  
The PrivateBank  
Proskauer Rose LLP  
Samuel A. Ramirez & Co., Inc.  
Rapid Displays  
Steven Rattner  
Karen and Irwin Redlener  
Debra Reich  
Reicon Capital  
Alison and Richard Ressler  
Candace and Ethan Riegelhaupt  
Carol and Paul Rigby  
Carolyn and Bob Riordan  
Peter Risafi  
Amy and Gordon Ritter  
Martha and Dana Robes  
Michael and Stephanie Rosen  
David S. Rosenbloom  
Jodi and Richard Rosenstein  
Jennifer and Adam Rosenthal  
Carol and Steve Rosner  
Bev and Howard Rossman  
Cynthia Rotell and Thomas Saunders  
Rye Presbyterian Church  
Alice Sabl  
Eila Skinner and Thomas Sadler  
The Sage Group, LLC  
Suzanne Fine and Christian Salomone  
Samana Fund  
James Sandman  
Susan and George Sard  
Stacey and Bob Sauerberg  
Charles Saunders

Gannon and Michael Schaefer  
 Nancy and Nelson Schaenen  
 Nancy and Norman Scher  
 Barbara and Robert Schmid  
 David and Diane Schonberger  
 Charlie Schrock  
 Alexandra Coburn and Chris Schroeder  
 Susan L. Schuman  
 Whitney and Patrick Schwarz  
 Sedgwick LLP  
 Segal Family Foundation  
 Senior Lifestyle Management, LLC  
 The Sexton Family Foundation  
 Jennifer Shea and Peter Bruns  
 Greg A. Shell  
 Laurie and Jonathan Shiff  
 Jackie and Bill Shiner  
 Barbara Sicherman  
 Sidgmore Family Foundation  
 Eileen and Steve Simmons  
 Carter and Talbott Simonds  
 John and Peggy Singleton  
 Amy Smith  
 Colby Smith  
 David R. Smith  
 Sallie and Mark Smylie  
 Gil Soffer  
 Ruth and Arne Sorenson  
 Sovereign Bank Foundation  
 The Spiritus Gladius Foundation  
 The Honorable Amy J. St. Eve and  
 Dr. Howard B. Chrisman  
 Roger Steffens  
 Jay Stern  
 Barbara and David Stone  
 Deborah Forte and Peter Stone  
 Stout Risius Ross  
 Sabin and Beverley Streeter  
 Daniel Sullivan  
 SunTrust Foundation  
 John Supera  
 David G. Susler  
 Svoboda Capital Partners  
 Edward T. Swan  
 Carol and James Taiclet  
 Lynn and Mark Taylor  
 Paul Thodeson  
 Gerald V. Thomas II  
 Lydia Thomas  
 Susan Thompson  
 Richard Tibbetts  
 Tides Foundation  
 Lindsay Tomenson  
 Salvador Torres, Jr.  
 Jethro and Cloricia Townsend  
 UBS

United Talent Agency  
 ValueAct Capital  
 Elsie Van Buren  
 Steve and Maxine Vasen  
 Amy and Kenneth Viellieu  
 Kathryn and Robert Vizas  
 Kate and Brad Vogt  
 Amy and Jonathan Vree  
 Cindy and Craig Wadler  
 Elizabeth Cecil and David Wagner  
 Sandy Worley and Marc Walfish  
 Camey and Patrick Walker  
 Claire Walton and Eve Waterfall  
 Juliaanne and George Warren  
 Weaver Family Foundation  
 Anne and Marcus Wedner  
 Gordy Weil  
 Debby and Peter Weinberg  
 Daniel Weiss  
 Barbara Asch and Jonathan Weiss  
 Amy and Kevin Wernick  
 Andrew Pincus and Laura Wertheimer  
 William Wesp  
 West Monroe Partners LLC  
 Widmeyer Communications  
 James W. Wilcox  
 Jane and Jerry Williams  
 WilmerHale  
 The Winokur Family Foundation  
 Pamela and Guy Wisinski  
 WME  
 Mr. and Mrs. Russell Wolff  
 Women Investment Professionals  
 Youth Foundation, Inc.  
 Michael Zamagias  
 Briana Zelaya  
 Nancy Friedman and Michael Zinn  
 Patricia Miller Zollar and Al Zollar  
 Zoomedia, Inc.  
 Michael Zugay

## Fans (\$100-\$999)

Anonymous (34)  
 Marc Abraham  
 Ina and Stephen Abrams  
 Dr. and Mrs. Albert A. Ackil  
 Dorothy Adams and Josephus de Groot  
 Samantha and David Adams  
 Christopher R. Adler  
 Ellen Adnopoz  
 Christopher Agnew  
 Ahmann  
 Rebecca and David Ainslie  
 Ellen Ainslie

Erin Ainslie  
 Martina Albright and Jon Bernstein  
 Brad Alcini  
 Alexandra Alderman  
 Sal Alesia  
 Andrew Alexander  
 Fran and David Alexander  
 Scott Alexander  
 Aaron Alexius  
 Khalida A. Ali  
 Angela F. Allen  
 Linda Allen and Ronald Bass  
 Rachel and Elijah Alper  
 Alphagraphics  
 Dorothy W. Alton  
 Anderson Kill & Orlick, P.C.  
 Harry Anderson  
 Christian Aparicio, Claremont Posse 2  
 (Los Angeles) Alumnus  
 Judith and Alan Appelbaum  
 Lynn Appelbaum  
 Tracy E. Aragon, Claremont Posse 3  
 (Los Angeles) Alumna  
 Christopher Arnold, Jr. and Connie Douglas Arnold  
 Milton Arnold  
 Jean Arroyo  
 Association of Fundraising Professionals  
 Saralee Melnick and Thomas Astle  
 David Atkins  
 Edmund E. and Vera Atkins  
 Atlanta Downtown Improvement District  
 Diane and Clifford Baden  
 Thayer and Kevin Baine  
 Robert S. Baizer  
 Carl Baker  
 David and Jennifer Balestrery  
 Carol Ball  
 Brentt Baltimore, Claremont Posse 3  
 (Los Angeles) Alumnus  
 Nathaniel Bankirer  
 Gigi Barnes  
 Elizabeth Bartle and David Boghossian  
 Susan and James Bartlett  
 Cecily Baskir and John Freedman  
 D. Blake Bath  
 Joyce and Michael Batippos  
 Louis Battey  
 C. William and Michele Baxley  
 Mayor Marsha Bayless  
 Matthew Beagle and Lisa Scopa and  
 the Beagle Family Fund  
 Phyllis Bean  
 Stephen W. Beard  
 Sarah Beatty and Mark Buller  
 Kelly and Brian Behrens  
 Nadja Bellan-White



Lara and Gary Belliveau  
Erica Roizen and Scott Belsky  
Cameron D. Benson  
Betty and Stuart Berelson  
David Berg  
Michael J. Berger  
Jay Berkelhamer  
Jean K. Berkelman  
Naomi Berkove  
Elliott and Debbie Berman  
Beth Beskin  
Besiana Besler, Middlebury Posse 8  
(New York) Alumna  
Elena and Saba Bhamidipati  
Claudia and Bert Bial  
Charlene Bien-Aime  
The Big Envelope  
Blake A. Biles and Laura L. Sessums  
Gail Weinmann and Nathan Billig  
Vitina Biondo and Yosef Riemer  
Chris Bisailon  
BET Networks  
Kelsey K. Black  
Steven L. Black  
James B. Blaney  
Sally and Fred Blesi  
Shaun and Andy Block  
Suzanne and Jeffrey Bloomberg  
Dennis and Shirley Bloomquist  
Beth and Charles Boehrer  
Christine Boeke  
Stefanie Bohm  
Melissa Bomes  
Sarah Bond  
Catherine and Charles Boone  
Val Boreland  
Susan S. Boren  
Mark Borman and Karen Hermelin  
Odette Borrego  
Alison Pratt Boswell  
Angela Boulart, Middlebury Posse 1  
(New York) Alumna  
Todd F. Bourell  
Peg and Bob Bourke  
Martin C. Bowen  
Lauren J. Bowers  
Alvin Bowles  
Rebecca C. Bowman  
Mary and Carl Boyer  
Kevin Boyle  
William Brack  
Colin Brennan  
Michele Brennan  
David Brenner

Joseph Brevard  
Jane and Ned Brewer  
Jennifer and Zachary Brez  
Steven Bronstein  
Karin and Jeffrey Bronswick  
Suzanne and Michael Brouder  
J'ai L. Brown  
Thomas Brown  
Adam Brumer, Grinnell Posse 1  
(Los Angeles) Alumnus  
Bryn Mawr College  
Nancy Taylor Bubes  
Chris Buck  
Dichter-Buckley Family Fund  
Kay and Matthew Bucksbaum  
Dean L. and Rosemarie Buntrock Foundation  
Barbara Burger  
Katharine Burke  
Jessica Oppenheim and Martin Burke  
Barbara and Ken Burnes  
Cheryl and Robert Byron  
Christon Cabey, Hamilton Posse 2  
(Boston) Alumnus  
Monique Cadle, Claremont Posse 1  
(Los Angeles) Alumna  
Amy and Gabe Cahill  
Carol and Ron Calvert  
Emile Cambry  
Bruce Campbell  
Corbin Campbell  
Bridget and Matthew Campbell  
Mr. John Canaday  
Andrew Cannava  
Maureen and Dan Cantillon  
Capital Resource Management, Inc.  
Steven T. Cappel  
Cargill  
Carl Amon  
David and Camille Carlstrom  
Marc Carmel  
Carnahan Daniels Foundation  
Mr. and Mrs. James G. Carr  
Christine Caruso, Brandeis Posse 6  
(New York) Alumna  
Lauren O. Casazza  
Karen and Jay Case  
Susan G. Case  
James M. Casey  
Clemmie Cash  
Sara Castellani  
Belinda Cavazos  
Tom Cerio  
Richard T. Certo  
William L. Chambers

Jeffrey Chan  
Elizabeth and Jay Chandler  
Chapman & Spingola LLP  
Matt Chapman  
Mark and Linda Chastang  
James Chestnut  
Camille DeFrank and Edward Chez  
Patricia and Wilfred Chilangwa  
Purnell and Joan Choppin  
Wendy and William Choslovsky  
John M. Christian  
Chip Christianson  
Jason Christopoulos  
Carolyn and Mario Cibelli  
Patricia A. Franco and Charles J. Clark  
Kathy and Harry Clark  
Marjorie Clarke  
Leslie and Raymond Clevenger  
Clifton Gunderson LLP  
Lauren Coakley-Vincent  
Joy Coates  
David Cochran  
Leslie and Jules Cogan  
Liz and Skip Coggin  
Lisa and Bruce Cohen  
Pippa Cohen  
Rachel Cohen  
Jeanne Cohn-Connor  
Sue and John Cole  
Dr. Lisa M. Coleman  
Ann and Rosecrain Collins  
Dr. Roosevelt Collins and Jean Collins  
Isaac Colon, DePauw Posse 6 (New York) Alumnus  
Reasey and Jason Colon  
Mark and Susan Coneeny  
Barbara and Jim Conen  
Annemargaret Connolly and Ken Frank  
Donna and George Converse  
Christine M. Coogan  
Carretta Cooke  
Donna S. Cooper  
Michael and Jeri Cooper  
Aaron and Leslie Corbett Chenoweth  
Susan and Spencer Cospier  
Nicholas Costino  
Scott Coulter  
Suzanne Coupe  
Marty Courage  
Donna Cowan and Barry Nelson  
Dr. Stephen and Kimberly Crago  
Donna M. Cramer  
Gayle and Steve Crane  
Yvonne Craver  
James and Sherrie Croker

Don Cronson  
Kimberly Cross  
Teresa Cross  
Mary Crowley  
President Ronald Crutcher and  
Betty Neal Crutcher  
Sara Crutcher  
Jovan Cruz  
Wanda Cruz-Mendez  
Jeanne M. Cullen  
Ann and Michael Cullinane  
Joan P. and Ronald C. Curhan Family Fund  
Darcy and Suzanne Curran  
James Curran & The Rollins School of Public  
Health at Emory University  
Brownlee Currey Foundation  
Mary Currie  
Joan and Phil Currie  
John Cushnie  
Suzanne D'Agostino  
Edward and Dawn D'Alelio  
Dammann Fund  
Michaela O. Daniel  
Liz Danowski  
Mindy D'Arbeloff  
Cindy Davies  
Ted and Danielle Davies  
Champ W. Davis, Jr.  
Dominique Davis, Wisconsin Posse 1 BAM  
(Chicago) Alumna  
Jaret Davis  
Jessica A. Davis  
Mary G. Davis  
Jamie and Robert Davis  
Willma H. Davis  
de Giulio Kitchen Design  
De la Peña Group, P.A.  
Deborah Deitcher  
Sarah E. Delaney  
Sharon and James Deming  
Bobbie and Charlie Denison  
Marion Deshmukh  
Charles and Phyllis Desmond  
Robert and Ellen Deutschman Family Trust  
Mr. James W. DeYoung, Sr.  
Chip Diggins  
DISYS  
Jim and Carol Dildine  
Molly DiRago and Mike Hendershot  
Discovery Networks Latin America/US Hispanic  
Lancelot Disley  
Aimee and Dan Divane  
Elise DiVincenzo  
Richard and Kristine Doherty

Shelley and Timothy Dolan  
Joanna Dolgin and Ari Kahn  
Joseph Dominguez  
Angela and Lance Donenberg  
Susan C. Donnelly  
Brendan Donoghue  
Sam Dorman  
Linda Douglas  
Michael Douvadjian  
Anne K. Downey  
Chelsea Downs, Colby Posse 1 (New York) Alumna  
Kevin Driscoll  
Melinda and Daniel Droege  
Droga5  
Betsy Duff  
Victoria and John Duff  
Elaine and Stuart Duhl  
Kelleigh Dulany  
Elizabeth and Daniel Duman  
Dunham Insurance Services Inc.  
Jan H. Dunn  
East Boston High School  
David Eaton  
Elise Eaton  
Robert and Margaret Eberhardt  
Education-Portal.com  
Patrick Edwards  
Sarah J. Edwards  
Thomas Edwards  
Colman O. Egan  
David P. Eich  
Elaxis Properties, Inc.  
Cathleen Ellsworth  
Kelley Ellsworth  
Malcolm Elvey  
Jonathan and Julia Eng  
Joel Epstein  
Yemisrach Erku, Wisconsin Posse 4  
(Chicago) Alumna  
Barbara Ewing  
Elizabeth Fabian  
Joan Fabry and Mike Klein  
Lori and Roy Fabry  
Barbara E. Fargo  
Jaliya Faulkner  
Marilyn Feinberg  
Deborah Feinstein  
Amy and Scott Feira  
Brenda and Lance Feis  
Rosemary Feit and Matt Moren  
E. Marla Felcher, Ph.D. and  
Max H. Bazerman, Ph.D.  
Warren and Rosalyn Feldberg  
Yvonne and Eric Feldman

Craig Felenstein  
Mary and Stanley Ferguson  
Javier Fernandez  
Barbara and Ralph Ferrara  
Lisa and Alex Ferrari  
Vince Ferraro  
Fredericka Fiechter  
Mr. and Mrs. Augustus B. Field IV  
Adrienne Findley  
Jennifer Fink  
Mr. and Mrs. Daniel Finkelman  
James and Barbara Finkelstein  
Anne and Wilfred Finnegan  
Christine Finzer  
Jay Fisetie and Bob Rosen  
Louise and J. Richard Fisher  
Kathryne Fisher  
Janet and Jim Fitzgibbons  
Patrick C. FitzPatrick  
Erik Flannigan  
Jennifer Flanz  
David Fleishman  
Rob and Susan Fleming  
Jeyson Florez, DePauw Posse 3 (Chicago) Alumnus  
Daniel S. Floyd  
Richard F. Flynn  
Arthur J. Fong  
Veronica Foo  
Burch and Brian Ford  
Jill Ford  
Nancy W. Ford  
Robert and Amy Forrest  
Alaina Fotiu-Wojtowicz  
Mary and J. Terrence Franke  
Michael and Gail Frankel  
Rhona and Julian Frazin  
Randolph Freeman II  
Martie and Frederick Fritz  
Leslie and Michael Gaffin  
Mark and Carolyn Gallette  
Mark Gallagher  
Ellen Gallo  
Gap Foundation Gift Match Program  
Todd Garner  
Tonya Garrett  
Michael Garzel  
Barbara and Charles Gately  
Carol and Larry Gelber  
Robert Gelnow  
Yusuf George  
Georgia Power Company  
Margaret and Amias Gerety  
Patti and Ronald Gern  
Shelton S. Getter  
Sunil Ghatnekar  
Heather Moore and Steven Ginsberg

Stefanie Gitler  
Kerry Glicken  
Jessica Glidden, Hamilton Posse 2  
(Boston) Alumna  
Joseph B. Glossberg  
Lana Goad-Steinberg  
Wyck Godfrey and Mary Kerr  
God's Anointed New Generation (G.A.N.G.) Youth  
Services  
Brian Goebel  
Diane and James Goetz  
Nancy and James Golding  
Michael P. Goldsmith  
Cidney and Jeffrey Golman  
Miguel Gonzalez  
PuraCarina L. Gonzalez, Wisconsin Posse 4  
(Chicago) Alumna  
John and Anne Gorczyca  
Gail Gordon  
Sherylle A. O. Gordon  
Tiane Gordon  
Eric Gorenstein, Vanderbilt Posse 6  
(New York) Alumnus  
Howard Gostfrand  
Merrill and Charles Gottesman  
Tom Gottschalk  
Julia Grace  
Natalee Graham, Brandeis Posse 1  
(New York) Alumna  
Phyllis Granat  
Clarence Grant Jr.  
Mary and Pat Grant  
Gerry Gray  
Heather Greeley  
Lewis Greenblatt  
Sari Granat and Timothy Greensfelder  
Judy and Bill Greffin  
Ed Gregory Esq.  
Donald C. Grenesko  
Sheila Griffin  
Jennifer and Jonathan Grosshandler  
Grossman Family Fund  
Group 360 LLC  
Martha Guarino  
Ortez Gude  
Roy Guenther  
Bob and Charlotte Guido  
Marty and Laurie Guinoo  
Tracey E. Guinyard  
Andrew Gumpert  
Ed and Sharon Gund  
Venu Gupta and Sendhil Revuluri  
Claudia Gutierrez, Babson Posse 2  
(New York) Alumna  
Dr. Marta Gwinn  
Ryan Haas

Hackberry Endowment, Malkin Family  
Mr. and Mrs. Peter Hadden  
David and D'Asia Hailey  
Ross Haime  
Steve Halper  
Jake Hamlin  
Sylvia and Roy A. Hammer  
Matthew Hanna  
Carol and Thomas Harding  
Brian and Sara Jane Harris  
Jennifer Harris, M.D.  
Quinne Harris-Lindsey  
Judith Stephenson and Scott Harshbarger  
Ronne Hartfield  
Whitney Hatch  
Renee and Mark Havens  
Bill Hawkins  
Dan Hawkins  
Jennifer Hawkins  
Brandy Hays, Rice Posse 1 (New York) Alumna  
Sara Hays and John Mitchell  
Kerry He, Bucknell Posse 1 (Boston) Alumna  
Tracy K. Healy  
Jessica Heard  
Samuel Heitner  
Denise Hendrix  
Phae Henson  
Lisa Herbert, Hamilton Posse 3 (Boston) Alumna  
Patti J. Herman  
Steven and Kathrena Herman  
Robert Herrman  
Richard E. and Vicki Mech Hester  
Milton P. Higgins, III  
Mr. and Mrs. Prentiss Higgins  
Frank Higley  
Alex Hill, Vanderbilt Posse 15 (New York) Alumnus  
Jennifer Hillman  
Steven Hirsch and Micki Hirsch  
John and Rachel Hitt  
Peter V. Hogan  
Holland & Knight Charitable Foundation, Inc.  
John A. Holler, Pomona Posse 3 (Chicago)  
Alumnus  
Cynthia and Ron Holmberg  
Elizabeth and Walter Holt  
Deborah Horn  
Scott Horne  
Tanwina Hossain, Claremont McKenna Posse 1  
(Los Angeles) Alumna  
Maisie and James Houghton  
Debra and Nathaniel Howard  
Pei Huang, Bowdoin Posse 5 (Boston) Alumnus  
Michelle and Kevin Huber  
Elizabeth Hudson  
Kito Huggins, Vanderbilt Posse 3 (New York)  
Alumnus

James F. Hughes  
Luisa Hunnewell and Larry Newman  
Norma B. Hutcheson  
Barbara Ince  
Iris and Angelo Ioffreda  
Tracy and David Isenberg  
Clay Jackson  
Ira L. Jackson  
Sonya J. Jackson  
Kyla S. Jacobs, Colby Posse 6 (New York) Alumna  
Jeannine and Justin Jacobson  
Samira Jacobson  
Gordon James III  
Karen James-Sykes  
Esther Jeong, Wheaton Posse 5 (New York) Alumna  
John Hancock  
Charles A. Johnson  
Barbara and Garrett Johnson  
Randee and Vance Johnson  
Leonard S. Jolles  
Jeffrey M. Jollon  
Laurence Jollon  
Tabitha Jones, Dickinson Posse 4  
(New York) Alumna  
Barbara Judge  
Marj and Bob Julian  
Barbara and William Julian  
Elizabeth and Richard Kadin  
Margo and Daniel Kadjan  
Alan Kadrofske  
The Kagan and Lisnow Families  
Evelyn Kalish  
Robert and Eun Kang  
Adriana and Marvin Karno  
Esther Kartiganer  
Loryn and Michael Kass  
Leslie Horwath and Alvin Katz  
Heidi Katz  
Leslie and Martin Katz  
Adam Kay  
Sam Kaywood  
Sean Keatts  
Peter C. and Deborah W. Keefe  
Michael Keegan  
Michael Kelber  
Shaun Kelley  
Linda Kellough and Gabriel Reisner  
Virginia and Preston Kendall  
Sarah Kennedy  
Shawn and Christopher Kerns  
Admiral Ali Khan  
Shaker and Zoe Khayatt  
Muin Khoury  
Christopher Kibarain  
William H. Kieffer III  
Patricia N. Kilduff

Tae Youn J. Kim, Brandeis Posse 5  
(New York) Alumnus  
Joe A. King  
Chris Kirkman  
Jill and Gary Kirshenbaum  
Leon Kirshenbaum  
Charles M. Kiven  
Jane A. Klein  
Matthew Klenk  
Anna Sinaiko and Josh Klevens  
Catherine Knight Steele, Illinois Posse 1  
(Chicago) Alumna  
Leah C. Knight  
Dayle and Raymond Kolak  
A. Lawrence Kolbe  
Robert E. Kolek  
Anthony Kontoleon  
The Matthew Korn and Cynthia Miller Family  
Foundation  
Marc and Donna Kozin  
Dorothy Davies and Jeremy Kramer  
Kelli and Charles Kreter  
Niccole and Jeremy Kroll  
John L. Kuehn  
Natasha F. Kuhlkin  
Roger Kumble  
Mr. and Mrs. Avedis Kundakjian  
Ellen Rakieten and Peter Kupferberg  
David Kurland  
Laura and Steven Kurzrok  
Nancy Lainer  
Michael Lainoff  
Heidi Lake  
Engy Lamour, Brandeis Posse 6  
(New York) Alumnus  
Ellen and Brian Land  
Maya and Peter Land  
Faye and David Landes  
Jill W. Landsberg  
Kristal Lane  
Susan and Andrew Langan  
Mary Ellen and Steve LaRose  
Michon Lartigue  
Carol Lashof  
Michael Latour  
Mr. and Mrs. William Laurence  
Mr. and Mrs. Edward P. Lawrence  
Tanya Lawson  
Nancy and Maurice Lazarus Fund  
Maribel Ledezma-Williams  
Alyce and Patrick Lee  
Stacey and David Lee  
Henry and Mary Lee  
Enty Tionowidjaja and Jimmy Lee  
Joonho Lee  
Alison Leff



- Ethan Leidinger  
Richard Leinberry  
Patrick C. Lenhart  
Denise and Pat Leonard  
Lori and Steven Lerman  
Lesnik Charitable Foundation  
Richard and Gabrielle Lesser  
Cindi Lestingi  
Michael J. Lestingi  
Ryan Letada, Wheaton Posse 5  
(New York) Alumnus  
Elaine R. Lev  
Gordon and Julia Levering  
Caryn and Jon Levey  
Leslee and Lewis Levey  
Debra Fried Levin  
Elaine and Donald Levinson  
Jeff Levitan  
The Mortimer Levitt Foundation  
Andrea Levitt  
Walter Levitt  
Irving A. Lewis  
Jeanette Lewis and Howard Goldblatt  
Patricia and Randall Lewis  
Shelby and Steve Lewis  
Mauricio Leyva, Lafayette Posse 2  
(New York) Alumnus  
Judy and Elliot Lichtman  
Beata Leja and Joshua Liebman  
Sheryl and Bob Lincoln  
Lee and Jonathan Linen  
Kenneth and Glenda Lingo  
Robert and Ann Lingo  
Margaret Ross Link  
Carol and James Linke  
Jin Choo and Ira Lit  
Michael Charles Litt  
Erika and Fred Little  
Lee and Peter Lockwood  
Stephanie Lofgren and Craig Stinebaugh  
Ann Logue and Rik Lantz  
London Achievement Processes  
Lone Pine Capital LLC  
Jean and Lester Longley  
Brian Lopez  
Katie Purnett Loss and James Loss  
Catherine Lovequist  
Roger Lowenstein Donor Advised Fund of the  
Liberty Hill Foundation  
LSN Partners, LLC  
Lakeisha Lubin  
Richard and Nancy Lubin  
Wonya Lucas  
Eric L. Lundt  
Karyn B. Lutz  
Tom Lynch
- Sonia Macey  
Erminia and Edward Mack  
Kavita and Brett Macleod  
Alec Macmillan  
Dallas Madlock, DePauw Posse 3  
(Chicago) Alumnus  
Anju Mahajan  
Larry Mahl  
Nancy Maier  
Ibrahim Majeed  
Shigeki Makino  
Dixie and Kenneth Malek  
The Malkin Fund, Inc.  
Thomas L. Mallman  
Brandon Malmberg  
Julianne Malveaux  
Carl V. Manalo, Vanderbilt Posse 8  
(New York) Alumnus  
Dimitra Manis  
Ann and Thomas Mann  
Melanie N. Manning  
Garfield Mantle  
Maplehurst Investment Group LLC  
Richard Marcus  
Elizabeth and Todd Marcus  
Mr. and Mrs. Davis S. Margold  
Danny Marin, Vanderbilt Posse 14 (New York)  
Alumnus  
Nancy Young and Mitchell Marinello  
Larry Mark  
Jane and Jerry Marks  
Nick Markwardt  
Andres Marrero  
Catherine and Nathaniel Marrs  
Ron Martin  
Veronica Martinez and Frank Moreno  
E. I. Mason  
Cora Masters Barry  
Charmaine Matthews  
Jane B. Mayer and Robert J. Mayer  
Phillip McAdoe  
Megan McAninch  
Elizabeth and William McCabe  
Kathleen McCartney  
Judith and Ray McCaskey  
Frances McCaughan and Nessian Fitzmaurice  
Lorri and Forrest McClain  
Cary McClelland  
Eliza Edel McClelland and Spencer McClelland  
Oreste P. McClung  
Daniel McCue  
Connie McDaniel  
Mary Kay McDannell  
John M. McDermott, Illinois Posse 4  
(Chicago) Alumnus  
Kari Black and Edward McGann
- Patrick McGarvey and Amy Vinciguerra  
Michael B. McGill  
Mary McGinn and Bernard Shapiro  
Michael and Pat McGinnis  
Patrick McGinnis  
Kathleen L. McGirr  
Rose Donna and Matthew McGovern  
Susan Milligan and Philip McGuire  
Lesley McIntosh  
John McIntyre  
Mr. Peter L. McKelvey and  
Mrs. Elizabeth P. McKelvey  
Will and Aline McKenna  
Jan and Jim McLaren  
Stuart and Meg McLaughlin  
Ursulla and Bobby McLeod  
Catherine A. McManus  
Bill and Ellen Meagher  
Andrea Mealey  
Samuel J. Meisels  
David Mejia, Illinois Posse 4 (Chicago) Alumnus  
Amalia and John Mendez  
Damyanna Mendoza, DePauw Posse 6  
(New York) Alumna  
Jennifer and Peter Merlin  
METROsquash  
Michael Meurer  
Diana Meyer  
Oded Meyer  
Eric Michaels  
Cicely and Robert Michalak  
Miller & Wrubel PC  
Caitlin Miller  
Jill and Joel Miller  
Pam and Josh Miller  
Lauren Milner  
Adrienne Mims  
Linda and Judson Miner  
Andrew Mingle  
Meredith Berkman and Daniel Mintz  
Richard and Judy Mirel  
Johnita W. Mizelle  
Maureen and Paul Mohling  
Bryan Monroe  
Juliana Monsalve, Illinois Posse 4  
(Chicago) Alumna  
Anne and Mead Montgomery  
Susan W. Moon  
Greg Moore  
Minyon Moore  
Jacob Moreno Coplon, Middlebury Posse 6  
(New York) Alumnus  
Sarah and Neal Moritz  
Peter Morreale  
Karen and Kevin Morris  
Paul Morris

Marilyn Morrissey  
 Winnie and Chris Mortenson  
 Bill Moseley  
 Valerie Mosley  
 Allan B. Muchin  
 Mulé Family Foundation  
 Nancy Perot Mulford  
 John Mulholland  
 Kevin Mullins  
 Nancy and Mickey Munley  
 Linda Murphy  
 Maria Murphy  
 Meghan and Michael Murray  
 Andrea L. Myers  
 May C. Naldo, Bucknell Posse 1 (D.C.) Alumna  
 Saul Natansohn  
 National Junior Tennis League  
 Edgar Ndjatou, Brandeis Posse 5  
 (New York) Alumnus  
 Jennifer Neal  
 Anne and Tim Neill  
 Meredith Neizer  
 Bruce Nelson  
 Claire and Joshua Nelson  
 Justin Nelson  
 New Fields Environmental Consulting  
 Marcy and Stuart Newberger  
 Constance B. Newman  
 Tonya G. Newman  
 Andy Nguyen, Denison Posse 2 (Chicago) Alumnus  
 Thuy Thanh and Tam Nguyen  
 Tony Nguyen, Michigan Posse 1  
 (Los Angeles) Alumnus  
 Gerald Nickelsburg  
 John and Jane Nickodemus  
 Jasmine Niernberger, Bucknell Posse 3  
 (D.C.) Alumna  
 John R. Nixon  
 Chris P. Nolan  
 Nomura America Foundation  
 Ken Nopar  
 Helen Norton and Kenneth Johnson  
 Ilene and Stephen Novack  
 The Honorable Stuart A. Nudelman  
 Clare Nunes  
 Watchen Nyanue, DePauw Posse 1 (Chicago)  
 Alumna  
 Caroline and Soren Oberg  
 Mr. and Mrs. John F. O'Brien and the O'Brien  
 Charitable Gift Fund  
 Mark O'Brien  
 Omegie Oghie  
 Shannon O'Grady  
 Catherine M. O'Hara  
 Michael Omenazu  
 Eileen P. O'Neill  
 Joseph and Margot Onek  
 Jennifer Ralph Oppold and Paul Oppold  
 Susan and Bruce Osborne  
 Ann O'Shaughnessey  
 Christie and Mark Osmond  
 Kurt Ostlund  
 Alicia Ozier  
 Barry Pace  
 Michael L. Pace, DePauw Posse 7  
 (Chicago) Alumnus  
 Paces Properties, Inc.  
 Karen H. Page  
 Christie Weiner and Richard Paisner  
 Bharati Vemulapalli and Srinivasa Paladugu  
 Jill and Mark Pan  
 Lisa Messinger and Aaron Panken  
 Thomas Papson  
 Stephanie Park  
 Nancy and Allen Parker  
 M. Craig Pascal  
 Alisa and Louis Paster  
 Keven Patterson  
 Melissa Paul  
 Gay McDougall and John Payton  
 Peachtree Smile Center  
 PEAK6 Investments, LP  
 Elizabeth Pearson  
 Kerry S. Pearson  
 Mandy and William Pekin  
 Mario Pelaez and Einah Pelaez, Lehigh Posse 2  
 (New York) Alumna  
 Chris E. Perkins  
 John and Laura Perkins  
 Jerilyn and Brian Perman  
 Catherine and Chip Perrone  
 Robert D. Persons  
 Michael Petrik  
 Anthony and Dorothy Petsoulakis  
 Sara and Christopher Pfaff  
 Felabi E. Phillips, Vanderbilt Posse 3 Alumna  
 George and Elizabeth Pickett  
 Hunter Pierson  
 Chad Pigg  
 David J. Piper  
 Mr. Jonathan and Mrs. Kristin Piper  
 Adrienne Pitts  
 Marc Platizky  
 Elizabeth Plunkett Buttimer  
 Christopher J. Pola  
 Mellie Polhill  
 William and Lia Poorvu  
 Barbara and Arthur Powell  
 Lisa Pownall-Gray  
 Amanda E. Preston  
 Helen Smith Price  
 Mark Price  
 Gabrielle Prisco, Vanderbilt Posse 4  
 (New York) Alumna  
 Adnan Prsic, Bowdoin Posse 2 (Boston) Alumnus  
 Bruce Quade  
 Anthony Quan  
 A. Robert Phillips and Marylynne Quarcoo  
 Marie Quintero-Johnson  
 R.M. Henry & Company  
 Pat and Bob Ralph  
 Elias Rangel, Claremont Posse 2  
 (Los Angeles) Alumnus  
 Jason L. Rapp  
 Jacquelin M. Rasulo and Tim Kasulis  
 Dwight Raulston  
 Bradley Ray  
 Stanley C. Raynor  
 Robert Rea  
 Sharon Redd  
 Leanne Redden and Brian Loeger  
 Reed Smith  
 Pamela and Michael Reed  
 Presley Reed  
 Terri H. Reed  
 Cynithea Reeder  
 Rachel Reicher  
 Linda and David Reichert  
 Amy and Neal Reiner  
 Lisandra Reynoso  
 Donna Rhudy  
 Ramonia and Adrian Rich  
 Frank Richard  
 Tony Richard and Elaine Klinsport-Richard  
 Nona Richardson  
 April and Albert Richter  
 Jenny Rickard  
 Timothy M. Riley  
 Bob Riordan  
 Nicole L. and Robert Rives  
 Jenifer Robbins  
 Barbara and Gary Roberts  
 Lora Robertson  
 Jen and Patrick Robinson  
 Susan and Bruce Rodgers  
 Kerry E. Rodgers  
 Gwendolyn and John Rogers  
 ROI Community Inc.  
 Hedy Roma and Antonio Gonzalez  
 Irving Roman, Jr.  
 Davis Rosborough  
 Nancy Rosen Blackwood  
 Joshua Rosenbaum and Wendy Meltzer  
 Adam Rosenberg  
 Karen Rosenfelt  
 Jennifer and Nick Rosinski  
 Dorothy Ross  
 Joan F. Ross  
 Sarah and Bill Ross  
 Yvette Ross  
 Royal Management Corporation  
 Marianne Wisner and Kendrick Royer  
 McGladrey & Pullen LLP  
 Jeffrey C. Rubenstein  
 Carol Rubin and Steven Kaplan  
 The Jack and Jamie Rubin Charitable Fund  
 Judith Rudge, Dickinson Posse 1  
 (New York) Alumna  
 Richard M. Rufolo  
 Mark Ryan  
 Suzanne Ryan  
 Mary Rybowiak and Tom Ferrini  
 Barbara and Robert Ryland  
 Kristin M. Rylko  
 S.T.E.P. Academics, Inc.  
 Anne and Barry Sabloff  
 Cristina Sacco, Bucknell Posse 2 (D.C.) Alumna  
 Nalleli Sagardia, Dickinson Posse 3  
 (New York) Alumna  
 Laura H. Sage  
 Naveen Sahney  
 Sharron and William Sailor  
 Julisa Salas, Middlebury Posse 8  
 (New York) Alumna  
 Carlos Salcedo, Brandeis Posse 4  
 (New York) Alumnus  
 Taqiy Saleem  
 Malcolm and BJ Salter  
 Mr. Barry Salzman  
 Jean Sampson  
 Elizabeth and Joseph Santarlasci  
 Jose E. Santiago  
 Alysia Sargent, DePauw Posse 1 (Chicago) Alumna  
 Kevin Sargis  
 Alyson Sattler  
 Soni Sayana  
 Kay Scardino  
 Philippa Scarlett  
 Next Door Company  
 Neil C. Schemm  
 Peter Schildkraut  
 Catherine and Kort Schnabel  
 Mike and Jane Schoenfeld  
 Susan Schorr  
 Debbie and Joel Schreier  
 Jolie Schwab and David Hodes  
 Jeffrey Schwartz  
 Leslie Schwartz  
 Lara and Eric Schwartzberg  
 Michelle Schweber  
 Dean A. Scott & Associates  
 Catherine Scott  
 Lewis Scruggs  
 Dan Seaver and William Speck  
 Sara Senatore  
 Wendy and Frank Serrino  
 Negin Shakibi  
 Usha Shamanna  
 James A. Shapiro  
 Carol Borden and Joel Shapiro  
 Halona P. Shaw  
 Megan and Steven Shebik  
 Kathleen and Ross Sherbrooke  
 Lawrence A. Sherman  
 Valerie Sherman  
 Tom Sherwood  
 Ronak Sheth, Denison Posse 3 (Chicago) Alumnus  
 Laurel and William Shiel  
 Mark and Anne Shields  
 Adi Shlesinger  
 Lynne and Eric Siegel  
 Mr. and Mrs. John T. Siegel, Jr.  
 Sylvia Siegel and Barry Weinstein  
 Nicole Silva  
 Abby Silverman  
 Michael Silverman  
 Natalie and Jonathan Silverstein  
 Cheryl Simmons  
 Jen Simokaitis  
 Andree Simon and Elias Stern  
 Neil Singh  
 Albi Skenderi, Wheaton Posse 6  
 (New York) Alumnus  
 Catherine and Martin Slark  
 Jerry Slavonia  
 Alex M. Smith III  
 Janet and Gary Smith  
 Gregg Smith  
 Keisha Smith  
 Robin P. Smith  
 Mike Sollott  
 Nancy Solomon and Alex Degood  
 Megan and Soyoun Song  
 Donna and Eugene A. Spatz  
 Lawson Spence  
 Emily Spitzer and Eric Lewis  
 Mr. and Mrs. George R. Sprague  
 Gayle B. Spruance  
 Veronica Squires  
 Margaret Stapleton  
 Iris and Donald Statland  
 Lucinda and T.L. Stebbins  
 Lynn Roland and Donald Steele  
 Dr. Robert E. Steele and Mrs. Jean Steele  
 Carol Stein  
 Barry Steiner  
 Nicole L. Steiner  
 Robert Steiner, Jr.  
 Michael Stelmacki  
 Margaret and Mark Stephan

Diane and Norval Stephens  
Stevenson Family Charitable Trust  
Kate and Richard Stevenson  
Brian Stokes  
Shannon Stokes  
Alice Stowell  
Carolyn Strauss  
Herbert and Elaine Strickstein  
Donna F. Stroup  
Peggy L. Sturm  
Sherry and Andrew Sturner  
Sylvia Sukop  
Carol and Joseph Sullivan  
Glen Surnamer  
Barbara A. Susman  
Grace and Lenard Swanson  
Rhonda and Scott Swanson  
Erik Swart  
Joni K. Swedlund  
Mary Sweeney  
Diane Swonk  
Shaka Tafari, Dickinson Posse 1  
(Los Angeles) Alumnus  
Yui Suzuki and Akio Tagawa  
Char Taggart  
Talent Optimization Partners, LLC  
Karen Tallman  
John Talvacchia  
Peggy and David Tanner  
Dhuanne and Douglas Tansill  
Lisbeth Tarlow  
Ann T. Taylor  
Joy and Robert Taylor  
Susan Taylor  
Karen and Nils Tcheyan  
Emily and Courtney Tedrowe  
Aaron Tehan  
Alice J. Tenney Philanthropic Fund  
Miriam Paul Thacker  
Laura Thatcher  
Barbara Theile  
Kency Theork, Bowdoin Posse 1 (Boston) Alumnus  
Melano Theork, Hamilton Posse 1  
(Boston) Alumnus  
Laura and Kurt Thiede  
Willetta Lewis and David Thomas  
Benjamin Thomases  
Kate Thompson and Dan Calano  
Monique Burns Thompson  
Solomon Thompson, Jr.  
Rosemary and Stewart Thomsen  
Ross Thomson  
Wendy and Mark Thurmond  
Susan and Paul Tierney

Michael Tilchin  
Elaine and Richard Tinberg  
TisBest Charity Gift Cards  
Louise Todd Ambler  
Anne Katherine Toomey  
Michael H. Traison  
Ngoc Tran, Bryn Mawr Posse 4 (Boston) Alumna  
Omri and Flora Traub  
Tamika L. Tremaglio  
Malinda R. Triller  
True Value Company  
Amy Tully  
Lauren and Bobby Turner  
Hollis and Alvan Turner  
Robert S. Tysko  
George and Dagmar Unhoch  
Uniroyal Holding, Inc.  
Anthony N. Upshaw  
Anne Urban and Peter Yeo  
Jill and Joe Valenti  
Rosa Lima and Manuel Valladares  
Maria Valls and Delbert Hartley  
Joel and Felicia Vargas  
Atul Varma  
Mario Vasquez  
Bobbie and Jeffrey Vender  
Kathleen Verderosa  
Maita Vert Crocker  
Michael and Nancy Vespoli  
Nancy Vickers  
Stanley B. Viltz, Ed.D.  
Bethany Vincent  
Donna and Curtis Voges  
Mark and Kathy Volker  
Lauren and Roger Vree  
W.W. Grainger, Inc.  
Susan Wald  
Ariel B. Waldman  
Karol Corbin Walker  
Mary Wall  
Tara Ghoshal Wallace  
Kathy Waller  
Catherine Wallerson  
Dena and Maurice Wallerson  
Elaine Walsh  
James Walsh  
Mary and Gary Walther  
Connie and Alex Wang  
Suzanne Warren  
Sheldon and Lisa Warrick  
Alfred C. Warrington  
Dexter Warrior  
Carol and Edwin Watkins  
Kate and Mitchell Watson

Kila D. Weaver  
Brian Webber  
Drs. Andrew and Nancy Weiland  
Lynne and David Weinberg  
Michel O. Weisz  
Jacob Welch  
Richard J. Welch  
Allyson Weseley and Sara Jones  
Tom West  
Edward Whalen  
Morris Whatley  
Emily Wheelwright  
Colin White  
Susan Watanabe and David White  
Tiffane White  
Ellen Whitney  
Shelley and Greg Why  
Craig Wiele  
Virginia Van Dyk and John Wilcox  
Marcia and Moses Wilds  
Katharine Wilkinson  
Charisse Williams  
Amy and Charles Williams  
Charles Williams  
Cheryl L. Williams  
Constance and Hugh Williams  
Elena Williams  
Emily M. Williams  
Felita T. Williams  
Jim and Kathy Williams  
Dr. and Mrs. Winfred W. Williams, Jr.  
Alice and Bruce Williamson  
Barbara and Robert Wilneff  
Laura Wilson  
Raymond Wilson  
Cleta Winslow  
Paige Wisdom  
Vicki and Andrew Wittenstein  
Debbie and Pierre Wolf  
Thomas M. Wolf  
Jane Wolfe  
Wonderland  
Leslie and Gary Wood  
Nancy and James Wood  
Ruth D. Woods  
Elizabeth Workman and Mark Williams  
Christalyn Wright  
Wrightwood Capital  
Mary and Harry Wulsin  
Mary H. Peabody Wulsin  
David Wyper  
Becky Yang, Vanderbilt Posse 9 (New York) Alumna  
Milton Yanofsky  
Robert Yeldell

Pam Yip  
Frederick Yochum  
Mark D. Young  
Ava D. Youngblood  
Linda and Robert Youngentob  
Abby Zanarini  
Juan Zapata  
Donna F. Zarcone  
Amy Rudnick and Michael Zeldin  
Paloma Zepeda  
Jamie Ziegler  
Nicole Zielinski  
Laura and Bruce Zimmerman  
ZogSports  
Haytham Zohny, Franklin & Marshall Posse 1  
(New York) Alumnus  
Karen and Joe Zuchero  
Elizabeth F. Zucker

## Supporters (\$1-\$99)

Anonymous (24)  
Samantha Aaron, Vanderbilt Posse 17 (New York)  
Alumna  
Randy Abeles  
Rosalia Abreu, Trinity Posse 5 (New York) Alumna  
Hector Acevedo, Hamilton Posse 4  
(Boston) Alumnus  
Jose F. Acevedo, Pomona 2 (Chicago) Alumnus  
Liza Josephson and Robert Adamenko  
Erin Ajemian  
Tinu Akinfolarin, Bryn Mawr Posse 5  
(Boston) Alumna  
Samantha Alcala, Trinity 5 (New York) Alumna  
Vianna Alcantara, Denison Posse 1  
(Boston) Alumna  
Lester Aleman, Grinnell Posse 1  
(Los Angeles) Alumnus  
Byron Alford  
Omaira J. Alicea, Bryn Mawr Posse 3  
(Boston) Alumna  
Charles Allen, Wheaton Posse 2  
(New York) Alumnus  
Eloisa Almaraz, Franklin & Marshall 3  
(New York) Alumna  
Azucena Alvarado, Dickinson Posse 2  
(Los Angeles) Alumna  
Kevin J. Alvarado, Claremont Posse 3  
(Los Angeles) Alumnus  
Manuel Amezcua  
Kenneth D. Anderson  
Emily and Jim Andrews  
Odinakachi Anyanwu, Bucknell Posse 1  
(D.C.) Alumnus

John Araujo  
Anna Aroutiounian, Dickinson Posse 3 (Los  
Angeles) Alumna  
Rita Ash  
Laforce J. Baker, Denison Posse 6  
(Chicago) Alumnus  
Ilona Bannister, Vanderbilt Posse 6  
(New York) Alumna  
Erik Barefield  
Marco Barreto, Brandeis Posse 1  
(New York) Alumnus  
Shoshana Bean  
Carlos Beato, Middlebury Posse 5  
(New York) Alumnus  
Winston Benjamin, Wheaton Posse 1  
(New York) Alumnus  
Joel T. Berelson and Charles T. Maples  
Allyson and Matthew Bergman  
Molly Bernstein, Trinity 5 (New York) Alumna  
Mousson Berrouet, Bryn Mawr Posse 4  
(Boston) Alumna  
Danielle Berry, Wisconsin Posse 1  
(Chicago) Alumna  
Raashi Bhalla  
Susan and Stephen Bisgeier  
Frankie Cevallos, Rice Posse 2 (New York) Alumna  
and Rico Blancaflor, Vanderbilt Posse 5  
(New York) Alumnus  
Julia Blount  
Thomas Body, Claremont Posse 2  
(Los Angeles) Alumnus  
Donelle Boose  
Kate Boylan, Wheaton Posse 1 (New York) Alumna,  
and Paul Kennedy  
Shawn Brackett and Andrea Gold  
David Brade, Denison Posse 3 (Boston) Alumnus  
Joel Brandzel and Andrea Anderson  
Mike and Renita Bridges  
Arthur and Kay Brief  
Olga Brik, Babson Posse 1 (New York) Alumna  
Joanna Brinton  
Ashlene P. Brown, Denison Posse 2  
(Boston) Alumna  
Nilda Bueno, DePauw Posse 1 (Chicago) Alumna  
Carolyn Burke  
Cory Burke  
Stacy Burnette  
Eleanor Byrnes  
Leide Cabral, Hamilton Posse 6 (Boston) Alumna  
Steve Cardillo  
Roberta Carlin  
Kailey Cartwright  
Stefan M. Castellanos, Pomona Posse 3  
(Chicago) Alumnus



Sienna Nancy Chambers, Middlebury Posse 5  
(New York) Alumna

Ha Na Chang, Claremont Posse 2  
(Los Angeles) Alumna

Monique Chateauneuf

Jia Chen, Colby Posse 1 (New York) Alumna

Joyce Chen

Fritzkeysha Chery, Denison Posse 3  
(Boston) Alumna

Gregory Chery, Centre Posse 2 (Boston) Alumnus

Priya Pravin Chhaya

Andres T. Chihuahua, Wisconsin Posse 3  
(Los Angeles) Alumnus

Amy Rebecca Chin, Middlebury Posse 8  
(New York) Alumna

Caroline Chirinos, Dickinson Posse 2  
(New York) Alumna

James A. Christman

Lorenz Cisne, Michigan Posse 1 Alumna

Jennifer and Steven Ciszewski

Michelle Clark

Renauld Clarke, Vanderbilt Posse 12  
(New York) Alumnus

Mignon L. Clyburn

Francine Cohen

Michelle and Jared Cohen

Mary Cole

Bryan Coleman, Bucknell Posse 3 (D.C.) Alumnus

Colgate-Palmolive Company

Mike Collins

Tamrah Collins, Grinnell Posse 1  
(Los Angeles) Alumna

Daniella L. Colon, Lafayette Posse 5  
(New York) Alumna

Jennifer L. Colon, Denison Posse 6  
(Chicago) Alumna

Stephen Conigliaro

Betty Conn

Ashley Conti

Brenda Contreras, Centre Posse 2  
(Boston) Alumna

Cookie's Corner

Christine Coolidge

Elizabeth A. Cornelison

Brian D. Cornell

Daniel Correa, Wisconsin Posse 3  
(Chicago) Alumnus

Natalie Cortez, Dickinson Posse 5  
(New York) Alumna

Susan Corwith

Beverly R. Cotton

Emily Crantz

Byron Crowe

Louise Cruz

Lindsay Damon

Farrah Darbouze

Keith Daubenspeck

Mircea DaVeiga, Bryn Mawr Posse 5  
(Boston) Alumna

Porschia Davis, DePauw Posse 4  
(Chicago) Alumna

Widade Deguerre, Bryn Mawr Posse 3  
(Boston) Alumna

Don DeLoach

Richard S. DeRose

Ibrahim Diallo, Trinity 5 (New York) Alumnus

Monica Diaz, Carleton Posse 4 (Chicago) Alumna

Sully Diaz, Middlebury Posse 4 (New York) Alumna

Danielle M. Diggins, Claremont Posse 3  
(Los Angeles) Alumna

Tiffany N. Dillard, Wisconsin Posse 3 (Los Angeles) Alumna

Siraad Dirshe, Hamilton Posse 6 (Boston) Alumna

Pierre Dizon, Wheaton Posse 6  
(New York) Alumnus

Tom Doar

Dobrzynski Accounting Service

Christine Doherty

Wendy Dolin

Rasheim Donaldson, Lafayette Posse 1  
(New York) Alumnus

Thelma and David Driskell

Krystal Dunlap, Illinois Posse 3 (Chicago) Alumna

Laura A. Dupuis

Elaine Edlin

Kareem Edwards, DePauw Posse 7  
(New York) Alumnus

Gary M. Elden

Roger Ellis, Lafayette Posse 2 (New York) Alumnus

Paul Elsberg

Marc Engle

Eric Espino

Nancy Espinosa

Melissa Estremera, Bryn Mawr Posse 4  
(Boston) Alumna

Tyrone F. Evans II, Hamilton Posse 5  
(Boston) Alumnus

Karin Evans

Expedia, Inc.

Ericka and Mark Fagerlin

Ann and Donald Farber

Patricia and Ernest Fears

Madelene Feingold

Naomi and Daniel Feldman

Mary and Richard Felix

Angelika Ferguson, Middlebury Posse 7  
(New York) Alumna

Vanessa Ferniza, Wisconsin Posse 1  
(Chicago) Alumna

Rodney Ferrell

Rodney Ferrick

Marvin Figueroa, Vanderbilt Posse 14  
(New York) Alumnus

John Findley

David and Judith Fischer

Lauren Flinn, Bowdoin Posse 1  
(Boston) Alumna

Astrid Flores, Bryn Mawr Posse 4  
(Boston) Alumna

Jessica Flores, Dickinson Posse 3  
(Los Angeles) Alumna

Susan Forsling

Leroy Foster, Vanderbilt Posse 7  
(New York) Alumnus

Thelma E. Foster

Michelle Foxx

Menda François, Bryn Mawr Posse 5  
(Boston) Alumna

Dr. James F. Frank

Rebecca Freedman

Rosemary Frias, Lafayette Posse 3  
(New York) Alumna

Deborah A. Friedman

Emily B. Friedman

Jesse Fripp

Laura Fruge

Kirsten Fuller, Dickinson Posse 2  
(New York) Alumna

Mary E. Galligan

Patricia Gant

Jose Luis Lopez and Paloma Garcia-Lopez

Edwin Gaston

Christopher Gates

Glenn Geist

Anna George, Hamilton Posse 4 (Boston) Alumna

Harry J. Gerard, Centre Posse 1 (Boston) Alumnus

Cynthia Gibson

Robyn Gibson, Hamilton Posse 6 (Boston) Alumna

Nelson E. Gil, Claremont Posse 4  
(Los Angeles) Alumnus

Jonathan Gitlin

Dean Gleason

Stacy Goldate

Michelle and Steve Goldish

Antonio Gonzalez, Claremont Posse 1  
(Los Angeles) Alumnus

Laurie S. Gonzalez

Nadeghda Gonzalez, Middlebury 7  
(New York) Alumna

Andrea Gorkin

Kevin Gottesman

Eboni Govan

Regina Romero and Quentin Graham

Garrett M. Green, Dickinson Posse 2  
(Los Angeles) Alumnus

Mary and Brian Griffin

Javier Griffiths

Alaine and Matthew Grossman

Sara M. Gulick

C. Keith Guthrie

Antonio J. Gutierrez, Union Posse 1  
(Boston) Alumnus

Delia A. Gutierrez, Dickinson Posse 2  
(Los Angeles) Alumna

Yarimee Gutierrez, Bryn Mawr Posse 1  
(Boston) Alumna

Megan Hall and Honor McNaughton

Marc Halpin

Rosemary L. Hank

Harley Business Group, LLC.

Bonnie and Jay Harris

Torrey Harris

Elizabeth Harvey

Timothy B. Harwood

Joan Hatfield

Spencer Heinz

Michael A. Henry, Dickinson Posse 2  
(New York) Alumnus

Susan Hero

Margarita Herrera, Carleton Posse 4  
(Chicago) Alumna

Sara Hessasta, Hamilton Posse 4  
(Boston) Alumna

Geoffrey F. Hicks, Hamilton Posse 5  
(Boston) Alumnus

Joshua Hicks, Hamilton Posse 4 (Boston) Alumnus

Trude Hilliard

ViCurtis A. Hinton

Kristen Hodge

Sarah and Aaron Hoffman

Louise Hoffman

Jan Holland-Chatman

Sarah Horn

Malvin Hoxhallari, Babson Posse 2  
(New York) Alumnus

Rosalva and Sergio Huerta

Dr. James Hughes

Suzette Huguet

Paula Leca and Michael Hunter

Anh Huynh, Bowdoin Posse 4 (Boston) Alumna

Alex Hwang, Claremont Posse 1  
(Los Angeles) Alumnus

Uju Idigo

Edward Imbier

Augusta A. Irele, Bryn Mawr Posse 6  
(Boston) Alumna

Jack/Bowen LLC

Sheree Jackman

Ashley N. Jackson, Hamilton 4 (Boston) Alumna

Vivian and Wilbur Jackson

Ellen M. Jakovic

Ashley James

Krystina and Jeff James

Kerlyne Jean, Bryn Mawr Posse 7  
(Boston) Alumna

Darnell Jeremiah, Babson Posse 3  
(New York) Alumnus

Naihomy Jerez, Wheaton Posse 5  
(New York) Alumna

Theresa John

Betty L. Johnson

Jeff Johnson

Julie Johnson

Dominique Jordan-Turner

Samantha Joseph

Dovera and William Kahn

William B. Kaplan

Susan Kataoka

Leslie Robinson and Kenneth Kates

Nicholas E. Kennedy

Barbara and Dick Kindig

Sven Kins

Gemayel Kinsey

Katherine M. Kinsman

David and Edna Kleinbaum

Deborah Kliene

Christopher Knight, Bowdoin Posse 4  
(Boston) Alumnus

Rebecca Kotkin and Don Steinburg

Karissa and Mark Kovner

Paul Krajewski

Alice and Richard Krautsack

Ericka Kroger, Illinois Posse 3 (Chicago) Alumna

Anne and Eric Kronenberg

Andrew T. Kugler

Adrian Kuzycz

Thomas Lagrange

Li Huan Lai, Bryn Mawr Posse 2 (Boston) Alumna

Seren Laibovitz

Kirk Lakeman

Matthew Lanuto

Emily Larson

Mark S. Lee

Liane Levetan

Joan and Murray Levin

Jessica Leving

Bernadette Limos, Illinois Posse 1  
(Chicago) Alumna

Frank Y. J. Lin

Shanta Lindo, Middlebury 8 (New York) Alumna

Jane and Barry Linsky

Jing Liu, Middlebury Posse 5 (New York) Alumna

Mosi London, Lafayette Posse 5  
(New York) Alumnus

Jesika Lopez, Bryn Mawr Posse 7 (Boston) Alumna

John LoPresto, Middlebury Posse 5  
(New York) Alumnus

Linda Lipton and Steven Lubet

Susan and Roger Lumppp

Richard W. Luo, Carleton Posse 6  
(Chicago) Alumnus  
Eileen L. MacDougall  
Mario Macias, Grinnell Posse 5  
(Los Angeles) Alumnus  
Sarah Mackin, Bryn Mawr Posse 3  
(Boston) Alumna  
Catherine and Michael MacKinnon  
Alison Macmillan  
Brent Madoo, Dickinson Posse 1  
(New York) Alumnus  
Tom Madsen  
MaryKate Mahoney, Centre Posse 2  
(Boston) Alumna  
Melida Maldonado, Middlebury 9  
(New York) Alumna  
Dr. Michele Marcus  
Kathryn and Peter Maropis  
Zackary Marsh, Bucknell Posse 2 (D.C.) Alumnus  
Erica Martinez, Carleton Posse 4  
(Chicago) Alumna  
Will Martinez  
Kendrah Mathews  
Karen Matts  
Daniel Maurer  
Mark Maurer  
Andres Mayobre  
Arlene Mayzel  
Jeff McCarter  
Lindsay McClure  
Larry McDonald, Illinois Posse 2  
(Chicago) Alumnus  
McKesson Foundation Matching Gifts Program  
Jerry McNulty  
Tom McNulty  
Meegan E. McVay  
Dr. James Means  
Jonathan Meisel  
Karla J. Melara, Wisconsin Posse 5  
(Los Angeles) Alumna  
Liz and Scott Mendel  
Sylvia Mendez, Middlebury 8 (New York) Alumna  
Lejla Merl  
Diego Millan, Bowdoin Posse 5 (Boston) Alumnus  
Michele Mindlin-Wallace  
Alison C. Minton, Dickinson Posse 2  
(Los Angeles) Alumna  
Deborah Mirabal, Brandeis Posse 9  
(New York) Alumna  
Guillaume and Mary Mittell Mauger  
Heidi Monge  
Jordan Monge  
Mickey Monteiro, Hamilton Posse 7  
(Boston) Alumnus

Mike Montgomery, Wisconsin Posse 4 (Los Angeles) Alumnus  
Brendan Mooney  
Chris Moore, Denison Posse 3 (Boston) Alumnus  
Joylynn Moore, Wisconsin Posse 6  
(Chicago) Alumna  
Monique Moore, Denison Posse 2  
(Chicago) Alumna  
Amy Morales, Wheaton 6 (New York) Alumna  
Eric Moskowitz  
Herbert B. Nechin  
Matthew R. Neidlinger  
Deidre-Ann Y. Nelson, Brandeis Posse 4  
(New York) Alumna  
New York Life Employees' "Your Choice" Giving Campaign  
Dana Newman  
Christine Nguyen, Centre Posse 2 (Boston) Alumna  
Timothy Nickels  
Francisco Nival, Hamilton Posse 2  
(Boston) Alumnus  
Erika Nunez, Dickinson Posse 2  
(Los Angeles) Alumna  
Alexandria R. Nunez-Bibby, Union Posse 1  
(Boston) Alumna  
Tracey L. Olsen  
Colin O'Malley, Vanderbilt Posse 6  
(New York) Alumnus  
Joe O'Malley  
Jose Ordonez, Centre Posse 1 (Boston) Alumnus  
Mergie and Larry Orell  
Jennifer Orme  
Eileen and Michael Orscheln  
Miriam Ortiz, Bryn Mawr Posse 4 (Boston) Alumna  
Nana A. Otutua-Amoah, DePauw Posse 6  
(Chicago) Alumna  
Jessica Pan, Wisconsin Posse 6 (Chicago) Alumna  
Frances Panasci  
Alex Park  
Elizabeth Libby and Carey W. Parker  
Tina Parks, Denison Posse 1 (Chicago) Alumna  
Glenda Partee  
Ronna and Barry Paul  
Randall E. Paulson  
Lisa and Noah Pearlstein  
Alan Pena  
Torin Perez, Lafayette Posse 4 (New York) Alumna  
Shaina Peterson  
James Petsoulakis, Middlebury Posse 4  
(New York) Alumnus  
Martha and Gary Pett  
Theresa Phillips  
Kelli Piepkow  
Samatha Pittman

Starr Plummer, Claremont Posse 2  
(Los Angeles) Alumna  
Maximiliano Pozo, Lafayette Posse 5  
(New York) Alumnus  
Adriana Price, Brandeis Posse 4  
(New York) Alumna  
Naomi Printz  
Jackney Prioly, Bryn Mawr Posse 2  
(Boston) Alumna  
Ashley E. Pruitt  
Kayla Quinn, Bucknell Posse 1 (Boston) Alumna  
Leigh A. Rahn  
Jennifer Ramos, Dickinson 7 (New York) Alumna  
Debbie and Jeffrey Ramsay  
Edgar and Rosemary Ramsey  
Nyree Ramsey, Vanderbilt 4 (New York) Alumna  
Sandra Reina  
Melissa Reyes, DePauw Posse 3  
(New York) Alumna  
Brett Reynolds  
Rhyner PR  
Everol Richards, Vanderbilt Posse 8  
(New York) Alumnus  
Morgane V. Richardson  
Joyce L. Robbins  
William A. Robelo-Lara, Claremont Posse 3  
(Los Angeles) Alumnus  
Erikka Robinson  
Laura Robinson  
Michael O. Romeo, Vanderbilt Posse 17  
(New York) Alumnus  
Francisco Rosario  
Sergio I. Rosas  
Daniel B. Rosenbaum  
Melanie Roussell  
Coretha M. Rushing  
Teviah Sachs  
Nadia and Greg Sager  
Catherine and Don Salge  
Marilee C. Sanders  
Reco Sanders, Dickinson Posse 3  
(Los Angeles) Alumnus  
Hannah Sandrowski  
Olatunji Sanni, Denison Posse 3  
(Chicago) Alumnus  
Yinnette Sano, Bryn Mawr Posse 1  
(Boston) Alumna  
Erica D. Santiago, Vanderbilt Posse 17  
(New York) Alumna  
John G. Santos  
Alison Sarokhan  
Marisa A. Sarto, Wisconsin Posse 5  
(Los Angeles) Alumna  
Nadia M. Sasso, Bucknell Posse 3 (D.C.) Alumna

Jeremiah Sataraka  
Sherwin Sattarzadeh  
Taylor Sauer  
Kelly S. Saulsberry  
Ashley Savannah, Bryn Mawr Posse 6  
(Boston) Alumna  
Josh Savitch  
Jorge Sawyer, Lafayette Posse 5  
(New York) Alumnus  
Dr. Leigh A. Sawyer  
Sharon Schachter  
Elizabeth and Sidney Schenkier  
Donald Schindler  
Kathleen and Rob Schnieders  
Meg Scholand  
Derek Schultz  
Lois and Jeffrey Schwartzberg  
Sean Sell  
Karen Seymour  
Scott Shapiro  
Liz and Jeff Sharp  
Cedric Shaw  
Rashidah Shelton, Lafayette Posse 1  
(D.C.) Alumna  
Tenzing Sherpa, Middlebury Posse 8  
(New York) Alumnus  
Anne H. Shields  
Bonnie and Orrin Shifrin  
Mark and Marcia Simione  
William Simpson III  
Ravieshwar G. Singh, Vanderbilt 18  
(New York) Alumnus  
Igor Skochilo, Brandeis Posse 5  
(New York) Alumnus  
Erika J. Smith, Lehigh Posse 2 (New York) Alumna  
Whitney L. Smith, Carleton Posse 6  
(Chicago) Alumna  
Alexander Smitham  
Sonya K. Sobrian  
Karen and James Solomon  
T. Reginald Solomon  
Danielle Sommer, Bowdoin Posse 1  
(Boston) Alumna  
Wagner N. Soto, Denison Posse 2  
(Boston) Alumnus  
Sarah Soule  
Edward Speights, Denison Posse 2  
(Chicago) Alumnus  
Amy Spurlock  
Rachel Steinback  
Jeffrey Stern  
Mr. and Mrs. James R. Stirn  
Kerry and Danielle Stone  
Emily Stone

Briana M. Strachan, Lafayette Posse 2  
(D.C.) Alumna  
Jaime Stroom  
Alex Strugatskiy  
Lance Sun, Middlebury 9 (New York) Alumnus  
Jordan Sutton, DePauw Posse 5  
(New York) Alumnus  
Meghan and Adam Swaim  
Judith Swirbalus  
Dudney Sylla, Bowdoin Posse 5 (Boston) Alumnus  
Stephanie Tafur, Hamilton Posse 6  
(Boston) Alumna  
Patricia R. Taranto  
Steve Tease  
Stephen Thacker and Luz Fortes  
Daniel Theodate, Hamilton Posse 4  
(Boston) Alumnus  
Loubens Theork, Hamilton Posse 2  
(Boston) Alumnus  
Joan L. Thomas  
Michelle J. Thomas  
Christine Thornton  
Moises L. Toledano, Hamilton Posse 5  
(Boston) Alumnus  
Rosa A. Torres, DePauw Posse 7 (Chicago) Alumna  
Rita Tran, Hamilton Posse 5 (Boston) Alumna  
Sarah Trillin and Alex Ruttenberg  
Alison Tripp  
Nicole Tsesmelis, Trinity Posse 1  
(New York) Alumna  
Sera Turgut  
Nakea J. Tyson, Bucknell Posse 3 (D.C.) Alumna  
Teresa and Edward Valent  
Aixa Velez, Wisconsin Posse 3 (Chicago) Alumna  
Daisy Ventura, Grinnell Posse 3  
(Los Angeles) Alumna  
Sean Vereen  
Hugo E. Vergara, Wisconsin Posse 5  
(Los Angeles) Alumnus  
Carlos A. Villa, Hamilton Posse 5  
(Boston) Alumnus  
Sharhea O. Wade, Bryn Mawr Posse 6  
(Boston) Alumna  
Almarie Wagner  
Amber C. Walker, Oberlin Posse 1  
(Chicago) Alumna  
Chon'tel Washington, Hamilton Posse 4  
(Boston) Alumna  
Damian Washington, Middlebury Posse 1  
(New York) Alumnus  
Yazmin Watkins, Dickinson Posse 1  
(Los Angeles) Alumna  
William Weddig  
Michael Weinberg and Mary Rauen

Michael L. Weinberg  
Alexander M. Weinstein  
Gregory Welch, Wheaton Posse 6  
(New York) Alumnus

Andrew J. Welz  
Noreen and Howard Wernick  
Patricia G. White  
Anne Millar Wiebe  
Cynthia and Mark Wilcox  
Mary and Paul Wilcox  
Richard Wilhelm

Darien Williams, Illinois Posse 3  
(Chicago) Alumnus  
Sarah Williams, Illinois Posse 3 (Chicago) Alumna  
Emerson Williams-Molett, Grinnell Posse 1  
(Los Angeles) Alumnus

Karen Williamson  
Latrice Willis  
Andrea Wistar  
WLK Solutions, Inc.  
Michael R. Wolfe  
Rina Wolok  
William Wong, Vanderbilt Posse 13  
(New York) Alumnus

Nancy Woods  
James H. Wooten, Jr.  
Kathleen E. Wright, Oberlin Posse 1  
(Chicago) Alumna  
Pandit Wright  
Paula Yepes, Middlebury Posse 1  
(New York) Alumna

Jessie Yip, Hamilton Posse 1 (Boston) Alumna  
Vicki and Richard Zimny  
Katie and Phil Zoloto  
Cynthia and Bernard Zucker  
David Zumba, Carleton Posse 6  
(Chicago) Alumnus

## In Kind

90+ Cellars  
Akerman Senterfitt  
Alphagraphics  
Alphagraphics  
Bank of America Foundation  
Bank of America Merrill Lynch  
Bertucci Corporation  
Christine Boeke  
Harvey Borkin  
Suzanne and Ted Bosler  
Boston Celtics  
Monique Cadle, Claremont Posse 1  
(Los Angeles) Alumna  
Columbus School of Law  
Children's Bureau of Southern California

Citi  
CleverMinds, Inc.  
Comedy Central  
ComPsych Corporation  
William E. Cook, Jr.  
Discovery Communications, LLC  
Ernst & Young LLP  
Fidelity Investments  
Finagle-A-Bagel  
The Freshman Fifteen  
Gap, Inc.  
Georgia-Pacific LLC  
Goldman, Sachs & Co.  
Goodwin Procter LLP  
The Hatcher Group  
Brandy Hays, Rice Posse 1 (New York) Alumna  
Craig W. Henderson  
Henry's Signs  
J & L Catering  
J.P. Licks  
John Hancock  
Kickass Cupcakes  
King & Spalding LLP  
Kirkland & Ellis LLP  
KPMG LLP  
Michael Lestingi  
Walter and Elizabeth Lohmann  
The McGraw-Hill Companies  
Barbara and Richard Metzler  
MTV Networks  
Museum of Contemporary Art  
New Orleans Saints  
The New York Times Company  
Old Mutual Asset Management  
PwC  
Putnam Investments  
Judith Rudge, Dickinson Posse 1  
(New York) Alumna  
Jackie and Bill Shiner  
Silverstein Properties, Inc.  
Simpson Thacher & Bartlett LLP  
Southeast Tennis and Learning Center  
STAPLES Center Foundation  
State Street Corporation  
SunTrust Bank  
Thomson Reuters  
The Travelers Companies, Inc.  
Trinity Real Estate  
Charlie Trotter's





# 2011 gala

On May 25, 600 guests came together at Pier Sixty in New York City for the 2011 Posse Gala. Leaders in philanthropy, business, academia and entertainment gathered to honor individuals and organizations that have made extraordinary contributions in the field of education.

The honorees—recipients of the Posse Star Award—were Hamilton College President Joan Hinde Stewart, Stephanie and Arthur Blank, Putnam Investments with President and CEO Robert L. Reynolds, and DePauw Posse (Chicago) alumnus Jeyson Florez, a consultant at Deloitte Consulting LLP. Emceed by *60 Minutes* correspondent Lesley Stahl with a special comedic performance by Jay Pharoah of *Saturday Night Live*, the highly successful event raised over \$2 million and helped support the launch of Posse's eighth chapter in New Orleans.

**At left:** (left to right from top) Stephanie and Arthur Blank, Hamilton College President Joan Hinde Stewart, Putnam Investments President and CEO Robert Reynolds, *60 Minutes* Correspondent Lesley Stahl, comedian Jay Pharoah from *Saturday Night Live*, DePauw Posse Alumnus Jeyson Florez.

## Innovators (\$100,000-\$249,999)

Garrett and Mary Moran  
Laurie and Jeff Ubben

## Leaders (\$50,000-\$99,999)

Atlanta Advisory Board  
Christie and Anthony de Nicola  
The Hellman Family Foundation  
David G. Kabiller  
Anna and Mason Morfit  
Karin and Philip Pead  
Ali and Brad Singer  
Sharon & Timothy H. Ubben and The Ubben Foundation

## Benefactors (\$25,000-\$49,999)

Affiliated Managers Group, Inc.  
Bank of America Merrill Lynch  
Anson & Debra Beard, Jr.  
Bloomberg  
Alastair and Jeanine Borthwick  
Colleen and Richard Fain  
D.C. Advisory Board  
Kelly Granat and Susan Boland  
Pamela and George F. Hamel, Jr.  
Karsch Capital Management LP

Steven Lefkowitz - CI Capital Partners LLC  
Misys Plc  
Morgan Stanley  
MTV Networks  
Say Yes To Education Foundation/  
George Weiss Associates  
James A. Star  
State Street Corporation  
Robert K. Steel Family Foundation  
Thomson Reuters  
The Travelers Companies, Inc.  
Joe and Malin Wolf

## Partners (\$15,000-\$24,999)

Anonymous  
Barclays Capital  
The Arthur M. Blank Family Foundation  
Credit Suisse  
Margaret & Rick Evans and  
Susuan & Gene Shanks  
Bev and Wade Fetzer  
Emily and Harold Ford, Jr.  
Michele Ganeless  
Gartner, Inc.  
Goldman, Sachs & Co.  
Stephanie and Tim Ingrassia  
International Flavors and Fragrances, Inc.  
Barbara and Ted Janulis  
Kirkland & Ellis LLP

Michael Kluger and Heidi Greene  
Connie and Bruce Macleod  
Miami Advisory Board  
The Nielsen Company  
Pearson  
PwC  
Marcia and Kevin Reilly  
Royal Caribbean Cruises Ltd.  
Jennifer Rusk, Bryn Mawr Posse 1 (Boston)  
Alumna  
Susie Scher and Allison Grover

## Mentors (\$10,000-\$14,999)

Chinh Chu and Ha Phuong  
The Dalton Family Foundation  
Anne and William Farrell  
Lise Strickler and Mark Gallogly  
Eric N. Macey  
Paul and Wendy Raether  
Steve Tisch  
Lisa and Mark Walsh

## Ambassadors (\$5,000-\$9,999)

Darcy and Jeffrey Ahl  
Suzanne and Michael L. Ainslie  
American Express Company  
Pamela and Brian Barefoot  
The College Board

Marjorie and Scott Cowen  
Dorothy and James Currie  
Dechert LLP  
Feroz and Erica Dewan  
Steven Ganeless  
Guardsmark, LLC.  
Hamilton College  
Noreen and Doug Herzog  
Kimberly and Sean Klimczak  
Robin and David Kranich  
Kutnick Foundation  
Lazard Frères & Co. LLC  
Paula and Tom McInerney  
Jim and Rosemary O'Neill  
Elizabeth and Jason Perkins  
Perlman Family Foundation  
Larry Robbins  
Rachel and John Rodin  
Catherine A. Saunders  
Peggy and Henry Schleiff  
Jane and Paul Shang  
Jennifer and Erich Tengelsen  
Emily and David Tobin  
Briana Zelaya

## Friends (\$1,000-\$4,999)

Daniel and Jaime Andriano  
Stefanie Lally-Ardrey and James Ardrey, Jr.  
Lawrence Austin  
Veronica and Anson H. Beard  
Susan R. Bell  
Robbie Oxnard Bent and David Bent  
Marc Bernstein  
Keri and Ronald Bernstein  
Sarah Greenwood and Joe Bondi  
Mary Jo Otsea and Richard Brown  
Steve and Gretchen Burke  
C. Christopher Cannon  
John Cucci  
Phil Davies  
Ann R. Langdon and Drew S. Days III  
Kristin DeClark  
Roberta and Vince DiBlasi  
Charles Edell and Kira Moriah  
Claire Ellis and Chad Cooper  
Brittain and Steven Ezzes  
Tony Felzen  
Mr. and Mrs. Brian D. Fitzgerald

Patricia White and Daniel Flatley  
Graham B. Foster  
Ken Fulk Design and Ken Fulk/Kurt Wooton  
Eric J. Furda  
David and Jennifer Graf  
Green Bay Packers  
The Hearst Corporation  
David Hermer  
Mr. James S. Hoyte and Ms. Norma Dinnall  
Melissa B. Ivey  
Elaine and Robert Jachino  
Valerie Ford Jacob  
Paul Julius  
Rachel and Mitch Katz  
Aidan M. Kehoe  
Douglas L. Land  
Theresa and John Larre  
Russell P. Levine  
Robert B. Levy & Bette Braun  
Susan Lyne  
John D. and Catherine T. MacArthur Foundation  
Anne and Jim Magill  
Marks Paneth & Shron LLP  
Roxanne and Rocco Martino  
Renee and William McCalmont  
Mark McKenna  
Middlebury College  
Nancy G. and Mark Mistretta  
Mr. and Mrs. Mark A. Moore  
Lane Murchison  
Michael and Debbie Murray  
Alan F. Myers  
Jonathan P. and Dorothy E. Nelson  
Monique L. Nelson, Vanderbilt Posse 3 (New York)  
Alumna  
Craig Nerenberg  
Daniel Neuwirth  
Caroline Niemczyk  
Nancy and David Pearson  
Samuel A. Ramirez & Co., Inc.  
Candace and Ethan Riegelhaupt  
Jodi and Richard Rosenstein  
Jennifer and Adam Rosenthal  
Susan and George Sard  
Stacey and Bob Sauerberg  
Nancy and Norman Scher  
Susan L. Schuman  
Whitney and Patrick Schwarz  
Select Equity Group Foundation

Maria and Paul Selian  
Amy Smith  
Jay Stern  
Deborah Forte and Peter Stone  
Lynn and Mark Taylor  
Lindsay Tomenson  
Elizabeth Cecil and David Wagner  
Weaver Family Foundation  
Debby and Peter Weinberg  
William Wesp  
Pamela and Guy Wisinski  
Patricia Miller Zollar and Al Zollar  
Zoomedia, Inc.

## Fans (\$100-\$999)

Anonymous  
Rebecca and David Ainslie  
Fran and David Alexander  
Khalida A. Ali  
Sarah Beatty and Mark Buller  
Lara and Gary Belliveau  
David Berg  
Besiana Besler, Middlebury Posse 8 (New York)  
Alumna  
Claudia and Bert Bial  
Christine Boeke  
Stefanie Bohm  
Sarah Bond  
Val Boreland  
Angela Boulart, Middlebury Posse 1 (New York)  
Alumna  
Rebecca C. Bowman  
David Brenner  
Bryn Mawr College  
Christon Cabey, Hamilton Posse 2 (Boston)  
Alumna  
Bruce Campbell  
Mr. and Mrs. James G. Carr  
Lauren O. Casazza  
James M. Casey  
Tom Cerio  
Jeffrey Chan  
Elizabeth and Jay Chandler  
Carolyn and Mario Cibelli  
Pippa Cohen  
William E. Cook, Jr.  
President Ronald Crutcher and Betty Neal Crutcher  
Sara Crutcher

Mary Currie  
Cindy Davies  
Mary G. Davis  
Jamie and Robert Davis  
Chip Diggins  
Kelleigh Dulary  
David Eaton  
Elizabeth Fabian  
Lisa and Alex Ferrari  
Erik Flannigan  
Jeyson Florez, DePauw Posse 3 (Chicago) Alumnus  
Jill Ford  
Tonya Garrett  
Yusuf George  
Tiane Gordon  
Phyllis Granat  
Sari Granat and Timothy Greensfelder  
Steve Halper  
Renee and Mark Havens  
Milton P. Higgins, III  
Alex Hill, Vanderbilt Posse 15 (New York) Alumnus  
Pei Huang, Bowdoin Posse 5 (Boston) Alumnus  
James F. Hughes  
Loryn and Michael Kass  
Shaker and Zoe Khayatt  
Christopher Kibarlian  
Anthony Kontoleon  
Niccole and Jeremy Kroll  
David Kurland  
Engy Lamour, Brandeis Posse 6 (New York)  
Alumnus  
Maya and Peter Land  
Maribel Ledezma-Williams  
Ethan Leidinger  
Richard and Gabrielle Lesser  
Sheryl and Bob Lincoln  
Dimitra Manis  
Kari Black and Edward McGann  
Catherine A. McManus  
Iric Michaels  
Jacob Moreno Coplton, Middlebury Posse 6 (New York) Alumnus  
Mulé Family Foundation  
National Junior Tennis League  
Watchen Nyanue, DePauw Posse 1 (Chicago)  
Alumna  
Catherine M. O'Hara  
Lisa Messenger and Aaron Panken  
Anthony and Dorothy Petsoulakis

Gabrielle Prisco, Vanderbilt Posse 4 (New York)  
Alumna  
Stanley C. Raynor  
Frank Richard  
April and Albert Richter  
Jenny Rickard  
Nalleli Sagardia, Dickinson Posse 3 (New York)  
Alumna  
Laura H. Sage  
Julisa Salas, Middlebury Posse 8 (New York)  
Alumna  
Carlos Salcedo, Brandeis Posse 4 (New York)  
Alumnus  
Mr. Barry Salzman  
Kay Scardino  
Mike and Jane Schoenfeld  
Adi Shlesinger  
Neil Singh  
Keisha Smith  
Lynn Roland and Donald Steele  
Brian Stokes  
Erik Swart  
Aaron Tehan  
Susan and Paul Tierney  
Dena Wallerson  
Kate and Mitchell Watson  
Drs. Andrew and Nancy Weiland  
Jacob Welch  
Craig Wiele  
Elena Williams  
Debbie and Pierre Wolf  
Christalyn Wright

## Supporters (\$1-\$99)

Allyson and Matthew Bergman  
Christine Coolidge  
Sheila Griffin  
Megan Hall and Honor McNaughton  
Karen Matts  
James Petsoulakis, Middlebury Posse 4 (New York)  
Alumnus  
Sean Vereen

## Special Thanks

Comedy Central



# financials

THE POSSE FOUNDATION, INC.  
STATEMENTS OF FINANCIAL POSITION  
AS OF DECEMBER 31, 2011 AND 2010



	2011	2010
<b>ASSETS</b>		
Cash and cash equivalents	\$3,684,907	\$3,396,891
Investments	29,593,972	29,572,378
University fees and other receivables	1,925,015	1,749,906
Pledges receivable, net	15,879,944	8,108,021
Prepaid expenses and other assets	413,275	340,929
Property and equipment, net	172,060	104,764
Cash and cash equivalents - permanently restricted	1,071,741	663,007
<b>TOTAL ASSETS</b>	<b>\$52,740,914</b>	<b>\$43,935,896</b>
<b>LIABILITIES</b>		
Accounts payable and accrued expenses	\$404,753	\$341,605
Deferred rent	510,260	510,512
Deferred income	1,283,335	1,143,334
<b>TOTAL LIABILITIES</b>	<b>2,198,348</b>	<b>1,995,451</b>
<b>COMMITMENTS</b>		
<b>NET ASSETS (a) (b)</b>		
Unrestricted	8,564,073	6,233,651
Temporarily restricted	20,671,739	14,400,040
Permanently restricted	21,306,754	21,306,754
<b>TOTAL NET ASSETS</b>	<b>50,542,566</b>	<b>41,940,445</b>
<b>TOTAL LIABILITIES AND NET ASSETS</b>	<b>\$52,740,914</b>	<b>\$43,935,896</b>

The accompanying notes on page 47 are an integral part of these financial statements.

**THE POSSE FOUNDATION, INC.**  
**STATEMENTS OF ACTIVITIES**  
**FOR THE YEARS ENDED DECEMBER 31, 2011 AND 2010**

	FOR THE YEAR ENDED DECEMBER 31, 2011				FOR THE YEAR ENDED DECEMBER 31, 2010			
	Unrestricted	Temporarily Restricted	Permanently Restricted	Total 2011	Unrestricted	Temporarily Restricted	Permanently Restricted	Total 2010
<b>SUPPORT AND REVENUE:</b>								
Contributions and grants	\$2,910,006	\$12,943,545	\$ —	\$15,853,551	\$3,118,211	\$2,797,164	\$ —	\$5,915,375
University fees	1,761,667	—	—	1,761,667	1,645,000	—	—	1,645,000
Service fees	22,532	—	—	22,532	2,235	—	—	2,235
In-kind contributions	306,238	—	—	306,238	243,909	—	—	243,909
Investment income	37,766	—	—	37,766	4,111,482	—	—	4,111,482
Fundraising events, net of direct benefits to donors	3,213,854	—	—	3,213,854	2,422,271	—	—	2,422,271
Net assets released from restrictions (a)	6,671,846	(6,671,846)	—	—	5,884,325	(5,884,325)	—	—
<b>TOTAL SUPPORT AND REVENUE</b>	<b>14,923,909</b>	<b>6,271,699</b>	<b>—</b>	<b>21,195,608</b>	<b>17,427,433</b>	<b>(3,087,161)</b>	<b>—</b>	<b>14,340,272</b>
<b>EXPENSES:</b>								
Program services:								
Recruiting services and training programs	9,472,018	—	—	9,472,018	8,900,281	—	—	8,900,281
Supporting services:								
Management and general	1,452,026	—	—	1,452,026	1,414,865	—	—	1,414,865
Fundraising	1,669,443	—	—	1,669,443	1,425,362	—	—	1,425,362
Total Supporting Services	3,121,469	—	—	3,121,469	2,840,227	—	—	2,840,227
<b>TOTAL EXPENSES</b>	<b>12,593,487</b>	<b>—</b>	<b>—</b>	<b>12,593,487</b>	<b>11,740,508</b>	<b>—</b>	<b>—</b>	<b>11,740,508</b>
<b>CHANGE IN NET ASSETS</b>	<b>2,330,422</b>	<b>6,271,699</b>	<b>—</b>	<b>8,602,121</b>	<b>5,686,925</b>	<b>(3,087,161)</b>	<b>—</b>	<b>2,599,764</b>
Net asset reclassification based on change in law	—	—	—	—	(5,466,475)	5,466,475	—	—
<b>Net assets - beginning of year</b>	<b>6,233,651</b>	<b>14,400,040</b>	<b>21,306,754</b>	<b>41,940,445</b>	<b>6,013,201</b>	<b>12,020,726</b>	<b>21,306,754</b>	<b>39,340,681</b>
<b>NET ASSETS - END OF YEAR</b>	<b>\$8,564,073</b>	<b>\$20,671,739</b>	<b>\$21,306,754</b>	<b>\$50,542,566</b>	<b>\$6,233,651</b>	<b>\$14,400,040</b>	<b>\$21,306,754</b>	<b>\$41,940,445</b>

The accompanying notes on page 47 are an integral part of these financial statements.

# financials

THE POSSE FOUNDATION, INC.  
STATEMENTS OF CASH FLOWS  
FOR THE YEARS ENDED DECEMBER 31, 2011 AND 2010



	2011	2010
<b>CASH FLOWS FROM OPERATING ACTIVITIES:</b>	\$8,602,121	\$2,599,764
Change in net assets		
Adjustments to reconcile change in net assets to net cash provided by operating activities:		
Depreciation and amortization	58,343	47,973
Amortization of pledge discount, net	(460,214)	(20,312)
Bad debt expense	—	200
Contributed securities	(405,453)	(112,368)
Realized gain on securities	(668,880)	(35,081)
Unrealized loss (gain) on securities	1,977,654	(2,826,738)
Subtotal	9,103,571	(346,562)
Changes in operating assets and liabilities:		
(Increase) decrease in assets:		
University fees and other receivables	(175,109)	(139,906)
Pledges receivable	(7,347,212)	2,467,523
Prepaid expenses and other assets	(72,346)	14,850
(Decrease) increase in liabilities:		
Accounts payable and accrued expenses	63,148	47,199
Deferred rent	(252)	33,882
Deferred income	140,001	70,000
<b>Net Cash Provided by Operating Activities</b>	1,711,801	2,146,986
<b>CASH FLOWS FROM INVESTING ACTIVITIES:</b>		
Purchase of investments	(1,335,866)	(1,236,342)
Proceeds from sale of investments	410,951	103,139
Purchase of property and equipment	(125,639)	(58,900)
Change in restricted cash	(408,734)	(9,930)
<b>Net Cash Used in Investing Activities</b>	(1,459,288)	(1,202,033)
<b>CASH FLOWS FROM FINANCING ACTIVITIES:</b>		
Collections of permanently restricted contributions	35,503	30,426
<b>Net Cash Provided by Financing Activities</b>	35,503	30,426
<b>Net Increase in Cash and Cash Equivalents</b>	288,016	975,379
Cash and cash equivalents-beginning of year	3,396,891	2,421,512
<b>CASH AND CASH EQUIVALENTS-END OF YEAR</b>	\$3,684,907	\$3,396,891

The accompanying notes on page 47 are an integral part of these financial statements.



# notes to financials

## **a) Net Assets**

Posse's financial statements have been prepared on the accrual basis of accounting. Posse adheres to accounting principles generally accepted in the United States of America.

## **b) Posse maintains its net assets under the following three classes:**

Unrestricted - represents resources available for support of Posse's operations over which the Board of Directors (the "Board") has discretionary control.

Temporarily restricted - net assets resulting from contributions and other inflows of assets subject to donor-imposed stipulations that either expire by the passage of time or can be fulfilled and removed by actions of Posse pursuant to those stipulations. When such stipulations end or are fulfilled, such temporarily restricted net assets are reported in the statement of activities as net assets released from restrictions. Earnings on endowment assets are temporarily restricted until appropriated by the Board for spending.

Permanently restricted - net assets subject to donor-imposed stipulations that principal be maintained permanently by Posse, but the earnings of which are available and accounted for in unrestricted operations.

**c) U.S. GAAP** provides guidance on the net asset classifications of donor-restricted endowment funds for not-for-profit organization that is subject to the Uniform Prudent Management of Institutional Funds Act ("UPMIFA"). New York State enacted a version of UPMIFA on September 17, 2010. This law is commonly referred to as "NYPMIFA" (New York Prudent Management Institutional Funds Act).

The Board has interpreted State law as allowing Posse to appropriate for expenditure or accumulate so much of an endowment fund as Posse determines is prudent for the uses, benefits, purposes and duration for which the endowment fund is established, subject to the intent of the donor as expressed in the gift instrument. Unless stated otherwise in the gift instrument, the assets in an endowment shall be donor-restricted until appropriated for expenditure by the Board. The Board appropriated for expenditure \$736,979 and \$661,603 from the cumulative earnings on permanently restricted funds for the years ending December 31, 2011 and 2010, respectively. Therefore the remaining earnings, if any, are reported as temporarily restricted.

## **For a copy of the audited financial statements, contact:**

The Posse Foundation, Inc.  
14 Wall Street, Suite 8A-60  
New York, NY 10005



# posse board

## national board of directors

### CHAIR

Jeffrey Ubben Founder and Managing Partner, ValueAct Capital

### PRESIDENT + FOUNDER

Deborah Bial The Posse Foundation

### SECRETARY

Philip M. Pead Managing Partner, Beacon Point Partners; Chair, Posse Atlanta Advisory Board

### TREASURER

Susie Scher Managing Director, Goldman, Sachs & Co.

Michael Ainslie Posse Chair Emeritus; Trustee, Vanderbilt University

Anson M. Bear, Jr. Advisory Director, Morgan Stanley

Eric Beckman Ares Management LLC; Chair, Posse Los Angeles Advisory Board

Robbie Oxnard Bent Private Sector

Alastair Borthwick Co-Head of Global Capital Markets, Bank of America Merrill Lynch

Anne Chwat General Counsel & Secretary, International Flavors & Fragrances

Ronald Crutcher President, Wheaton College

Hon. David N. Dinkins Professor, School of International & Public Affairs, Columbia University; 106th Mayor, City of New York

Martin Frederic Evans Presiding Partner, Debevoise & Plimpton LLP

Richard D. Fain Chairman & Chief Executive Officer, Royal Caribbean Cruises Ltd.

Harold Ford, Jr. Managing Director, Morgan Stanley

Michele Ganeless President, Comedy Central

Kelly Granat Managing Director, Lone Pine Capital

James S. Hoyte Fellow, W.E.B. DuBois Institute for African and African American Research, Harvard University

Barbara Janulis Private Sector

Steven M. Lefkowitz President, CI Capital Partners

Bruce Macleod Retail Principal, Arcturus Real Estate

Garrett Moran Senior Managing Director, The Blackstone Group

Diane B. Patrick, Esq. Partner, Ropes & Gray LLP; First Lady of Massachusetts

Charles Phillips CEO, Infor

Henry Phillips Vice Chairman and Regional Managing Partner, Northeast, Deloitte LLP; Chair, Posse New York Advisory Board

Dan Pickering Co-President, Tudor, Pickering, Holt & Co.

Paul J. Selian Executive Vice President, Chief Investment Officer, State Street Corporation; Chair, Posse Boston Advisory Board

Frank Sesno Director, School of Media and Public Affairs, The George Washington University; Chair, Posse D.C. Advisory Board

Eugene B. Shanks, Jr. Corporate Director, Private Sector; Trustee, Vanderbilt University

Brad Singer Partner, ValueAct Capital

Mark Taylor Regional Director & Senior Vice President, Capital Group Private Client Services

David A. Thomas Dean, Georgetown University McDonough School of Business

José Tomas President, Latin America & Caribbean and Chief People Officer, Burger King Corporation

Timothy H. Ubben Founding Chairman, Posse Chicago; Retired Founder and Chairman,

Lincoln Capital Management; Trustee, DePauw University

## life directors

Patricia Arnold

Anthony J. Collerton

Wade Fetzer

Trustee Emerita, Wheaton College

Private Sector

Retired Partner, Goldman, Sachs & Co.; Past Chairman and

Current Member, University of Wisconsin

Foundation Board of Directors

## national board of advisors

Derek Bok

William G. Bowen

Hon. Gaston Caperton

Patricia Gándara

Joe Gregory

Bob Herbert

Vernon E. Jordan, Jr.

John Leguizamo

Gary Orfield

Pamela Shriver

Harry Smith

Lesley Stahl

300th Anniversary University Professor, University President Emeritus, and Faculty

Chair of the Hauser Center for Nonprofit Organizations, Harvard University

President Emeritus, Andrew W. Mellon Foundation and Princeton University

President, College Board; former Governor of West Virginia

Professor of Education, University of California, Los Angeles; Co-Director, The Civil

Rights Project/Proyecto Derechos Civiles

Private Sector

Journalist and Author

Senior Managing Director, Lazard Frères

Actor

Professor of Education, Law, Political Science, and Urban Planning,

University of California, Los Angeles; Co-Director The Civil Rights Project

Private Sector

Journalist

Correspondent, *60 Minutes*

## atlanta advisory board

### CHAIR

Philip M. Pead

Jack Capers

John L. Hatfield

Sharrod McClusky

Suzanne D. Patterson

Carl E. Peoples

Jim Price

Roland Pritchett

Paul Quiner

Gerald V. Thomas II

Managing Partner, Beacon Point Partners

Partner, King & Spalding LLP

Private Sector

Boston University Posse (Atlanta) Alumnus

Vice President, Corporate Controller and Chief Accounting Officer, Coca-Cola Enterprises Inc.

Vice President, Private Wealth Management, Goldman, Sachs & Co.

Co-Chairman and Co-CEO, ExamWorks

Senior Vice President, Private Wealth Advisor, UBS Private Wealth Management

Senior Vice President, Corporate Strategy and Business Development, McKesson Corporation

Tax Principal, Ernst & Young LLP

## **boston advisory board**

### **CHAIR**

Paul J. Selian	Executive Vice President, Chief Investment Officer, State Street Corporation
Hector Rene Acevedo	Hamilton College Posse (Boston) Alumnus; Communications and Social Media Coordinator, The Interaction Institute for Social Change
Lawson Prince Allen	Licensed Clinical Social Worker; Certified AAMFT Therapist
T. Michael Brock	Managing Director, Equities, Barclays Capital
Timothy E. Codrington	Private Sector
Richard Fentin	Senior Advisor, Fidelity Investments
Churchill Franklin	Executive Vice President and Chief Operating Officer, Acadian Asset Management
Linda Tilton Gibson	Executive Vice President, Chief Operating Officer and Head of Affiliate Management, Old Mutual Asset Management
James S. Hoyte	Fellow, W.E.B. DuBois Institute for African and African American Research, Harvard University
Susan McSwain	Senior Vice President and Deputy General Counsel, Fidelity
Christopher Moore	Denison University Posse (Boston) Alumnus; Advanced Communications Assistant, The Office of Mayor Thomas M. Menino
Joseph Paresky	Retired Senior Vice President, Thomas Cook Travel
Paul T. Quistberg	Chief Investment Officer, BofA Global Capital Management
Catherine A. Saunders	Head of Registered Investment Advisory Business, Putnam Investments

## **chicago advisory board**

### **CHAIR**

Mark Taylor	Regional Director & Senior Vice President, Capital Group Private Client Services
Rod Adams	Greater Chicago Human Resource Leader, PwC
Kathleen Cantillon	Managing Director, ASGK Public Strategies
Celeste Center	Senior Vice President, Private Client Advisor, U.S. Trust, Bank of America Private Wealth Management
Tamara Cooper Dempsey	Private Sector
Yemi Erku	University of Wisconsin-Madison Posse (Chicago) Alumna; International Marketing Specialist, W.W. Grainger
Patricia Wilson Fridley	Senior Advisor, Center for Financial Stability
Gary Kirshenbaum	President, James L. O'Brien Associates, Inc., Exclusive Agents for COFACE N.A.
J. Stuart Kruse	President, Kruse Asset Management
Richard Metzler	Managing Partner, Trove Partners, LLC
Jorge A. Quezada	Director, Diversity, Multicultural Growth Strategies, Allstate Insurance Company
Ronak Sheth	Denison University Posse (Chicago) Alumnus; Junior Research Associate, PEAK6 Investments
Hon. Amy J. St. Eve	District Judge, U.S. District Court, Northern District of Illinois
Timothy H. Ubben	Founding Chairman, Posse Chicago; Retired Founder and Chairman, Lincoln Capital Management; Trustee, DePauw University

## **d.c. advisory board**

### **CHAIR**

Frank Sesno	Director, School of Media and Public Affairs, The George Washington University
Bob Barrett	Partner, PwC
Donella P. Brockington	Vice President, Business Development, ACS, a Xerox Company
Bonnie Cohen	Principal, B. Cohen and Associates; Former Undersecretary for Madeleine Albright
William E. Cook, Jr.	Partner, Arnold & Porter LLP
Joan I. Fabry	Architect
Jeyson Florez	DePauw University Posse (Chicago) Alumnus; Federal Strategy and Operations Consultant, Deloitte Consulting LLP
Michael C. Ford	Vice President of Global Diversity and Inclusion, Hilton Worldwide
John Gilkes	Principal, Forensic & Dispute Services, Deloitte Financial Advisory Services LLP
Caroline H. Little	President and CEO, Newspaper Association of America; Trustee, Grinnell College
Walter Lohmann	Partner, Kirkland & Ellis LLP
James Owen Mathews	Vice Chairman, Healthy Companies International
Camille Riggs Mosley	Vice President of Development and Strategic Alliances, National Association for Equal Opportunity in Higher Education
Carla L. Peterson	Professor, Department of English, University of Maryland, College Park
Thomas W. Rabaut	Senior Advisor, Carlyle Group
David M. Riley	Senior Vice President, Capital Research Company
Cristina Sacco	Bucknell University Posse (D.C.) Alumna; Integration Assistant, Arnold & Porter LLP
Lydia W. Thomas PhD	Trustee, George Washington University; Retired President and CEO, Noblis

## **houston advisory board**

### **CHAIR**

Dan Pickering	Co-President, Tudor, Pickering, Holt & Co.
Carole M. Wood	Partner, King and Spalding LLP

# posse board (cont.)

## los angeles advisory board

### CHAIR

Eric Beckman	Ares Management LLC
Christian Aparicio	Claremont McKenna College Posse (Los Angeles) Alumnus; Marketing Brand Management Coordinator, Health Net Inc.
Marc Cohen	Senior Partner, Kirkland & Ellis LLP
Jonathan Glickman	President, Motion Picture Group, Metro-Goldwyn-Mayer Pictures Inc.
Lee Hutter	Managing Director, JPMorgan Private Bank
Jonathan Larsen	Regional Managing Principle, Cassidy Turley
Allison C. Minton	Dickinson College Posse (Los Angeles) Alumna; Publishing Product Manager, Advertise.com
Kenneth Moelis	CEO, Moelis & Company Holding LLC
Jason Reese	Chairman and CEO, Imperial Capital LLC
Deborah Ruosch Conrad	Partner, Milbank, Tweed, Hadley & McCloy LLP
Eric Schiffer	CEO, 99¢ Only Stores
Lisa A. Smith	Managing Director, Investment Banking Division - Public Finance, Loop Capital Markets
Salvador Torres, Jr.	Vice President, Barclays Capital
Rajneesh Vig	Partner, Tennenbaum Capital Partners, LLC
Craig Wadler	Managing Director, Moelis & Company Holding LLC
Kevin M. Wernick	Senior Managing Director, VerityPoint
James W. Wilcox	Vice President, Investment Management Division, Goldman, Sachs & Co.

## miami advisory board

### CHAIR

José Tomas	President, Latin America & Caribbean and Chief People Officer, Burger King Corporation
Thomas D. Avazian	Managing Director-Sales Executive, Global Business Origination, Bank of America Merrill Lynch, Global Corporate and Investment Banking
David K. Black	Attorney, Berger Singerman
Ramon L. Castillo	DePauw University (New York) Alumnus; Vice President, Boba Station, Inc.
Sabrina R. Ferris	Shareholder, Greenberg Traurig, LLP
Joanna Grover-Watson, MSW	Private Sector
Eleni Pyles Kalisch	Vice President, Federal Government Relations, Royal Caribbean Cruises Ltd.
Michael E. Peacock	Managing Director, Investments, The Excelsior Group of Wells Fargo Advisors, LLC
Jean-Pierre Trouillot	Partner, Transaction Services, KPMG LLP

## new orleans advisory board

Adam Brumer	Grinnell College Posse (Los Angeles) Alumnus; Innovation Fellow, Louisiana Department of Education
Jill Glazer	Board of Trustees, Tulane University

## new york advisory board

### CHAIR

Henry Phillips	Vice Chairman and Regional Managing Partner, Northeast, Deloitte LLP
Jeffrey Ahl	Private Sector
Joe DePlasco	Managing Director, Dan Klores Communications
Charles Edel	Professor, U.S. Naval War College
Richard C. Gay	Executive Vice President, Strategy and Operations, MTV & VH1
Chris Heffernan	Director, PwC
David Kranich	Director, Credit Trading, Crédit Agricole CIB
Engy Lamour	Brandeis University Posse (New York) Alumnus; Financial Associate, AXA Advisors
Nancy Mistretta	Retired Partner, Russell Reynolds
A.J. Murphy	Co-head, Global Leveraged Finance and Capital Markets, Bank of America Merrill Lynch
Jack Murphy	Principal, Levin Capital Strategies, LP
Monique L. Nelson	Vanderbilt University Posse (New York) Alumna; CEO, UniWorld Group Inc.
Kevin Reilly	Partner, Transaction Support, Ernst & Young LLP
Ethan Riegelhaupt	Senior Vice President, Corporate and Public Affairs, Edelman
Nicole Tsesmelis	Trinity College Posse (New York) Alumna; Global Contributions Specialist, Colgate-Palmolive Company

*The lists above reflect elections and appointments as of June 2012.*

# posse staff

## **national staff**

Deborah Bial, Ed.D., *President + Founder*  
Arielle Altman, *Development Officer*  
Rosalie Aponte, *Human Resources Coordinator*  
Rosanna Aybar, *Chief Financial Officer/Chief Administrative Officer*  
Regina Bain, *Regional Vice President*  
Rico Blancaflor, *Vice President of Strategic Projects*  
Vy Deal, *Grants Accountant*  
Jasmine M. Dilone, *Accounting Associate*  
Matthew Fasciano, *Chief Operating Officer*  
Jonathan Garcia, *IT Manager*  
Melanie Gisin, *National Development Associate + Database Manager*  
Bari Katz, *National Training Specialist*  
Jennifer Kaizer, *Assistant to the Vice President of Development*  
Alexandra Mane, *Associate Director of Development*  
Lucia Mattox, *Assistant to the Chief Operating Officer*  
Harry Mazarakis, *Accounting Manager*  
Julie Mente, *Public Relations Associate*  
Jake Moreno-Coplon, *Assistant to the President*  
Leticia Peguero, *Regional Vice President*  
Richard Porter, *National Director of Training + Evaluation*  
Melissa Reyes, *National Director of Career + Alumni Programs*  
Alba Rodriguez, *Posse Institute Director*  
Hedy Roma, *Vice President of Development*  
Rassan Salandy, *Vice President for External Affairs*  
Kara Schlindwein, *Design + Publications Manager*  
Miriam E. Schwartz, *National Officer for Alumni Relations*  
Melissa E. Smith, *Senior Research Associate*  
Mickey Steiner, *Administrative Assistant*  
Maxi Villar, *Receptionist*  
Lorilynn Violanta, *Development Officer*

## **posse atlanta**

Zenith Houston, *Director*  
Autumn Andrews, *Trainer*  
Tiffany Curtis, *Trainer*  
Jacquie Forbes, *Career Program Manager*  
Camille Gray, *Program Coordinator*  
Joshua Jefferies, *Senior Trainer*  
Shireen Millicans, *Senior Trainer*  
Nadia Reese, *Assistant to the Director*  
Thomas Witherspoon, *Program Director*

## **posse boston**

Lamont Gordon, *Director*  
Charles Allen, *Career Program Manager*  
Melissa Arsenie, *Program Coordinator*  
Pharen F. Bowman, *Trainer*  
Jessica Ch'ng, *Assistant to the Director*  
Danny Hoffman, *Trainer*  
Augusta Irele, *Trainer*  
Shanna Masdea, *Program Director*  
Cori Mykoff, *Development Officer*  
Hannah Roth, *Trainer*

## **posse chicago**

Dominique Jordan-Turner, *Director*  
Rudy Ash, *Senior Development Officer*  
Jamilyn Bailey, *Program Director*  
Michelle Bess, *Assistant to the Director*  
Bryan Coleman, *Trainer*  
Dominique Davis, *Trainer*  
Megan Fletcher, *Trainer*  
Crystal Gonzales, *Career Program Manager*  
Jessica Harless, *Program Director*  
Sivan Levaton, *Trainer*  
Karen Matts, *Development Officer*  
Maya Shastri Menon, *Senior Trainer*  
Raymonda Reese, *Program Coordinator*  
Jeremiah Sataraka, *Program Coordinator*  
Daniel Silva-Alvarez, *Senior Trainer*  
Miles Warren, *Career Program Manager*

## **posse d.c.**

Tamara Wilds Lawson, *Director*  
Rachel Goldman Alper, *Development Officer*  
Josh Christianson, *Career Program Manager*  
Sierra Hayes, *Trainer*  
Robyn Lingo, *Program Director*  
Andres G. Maldonado, *Program Coordinator*  
Joseph Peralta, *Senior Trainer*  
Dave Salge, *Senior Trainer*  
Briana Strachan, *Assistant to the Director*  
Akash Tharani, *Trainer*

## **posse houston**

Alexandria Bland, *Program Coordinator*  
Meghan Perez, *Trainer*  
Tairinda A. Rushing, *Program Director*

## **posse los angeles**

Tamara Y. Craver, *Director*  
Lester Alemán, *Program Director*  
Jena Brown, *Development Officer*  
Stephanie Champion, *Senior Trainer*  
Rachel Lederman-Fusco, *Program Director*  
Diana León, *Program Coordinator*  
Andy Liang, *Program Coordinator*  
Karla Melara, *Assistant to the Director*  
Eberechi Obi, *Trainer*  
Rachel A. Resnick, *Career Program Manager*  
Richard Robinson, *Trainer*  
Ricardo Sanchez Jr., *Career Program Manager*  
Marley Shepard-Ohta, *Trainer*  
Ethan Smith, *Trainer*  
Tina M. Smith, *Trainer*

## **posse miami**

Nadine Dalrymple, *Director*  
Stephanie Alvarez, *Development Officer*  
Benjamin Bingman-Tennant, *Program Director*  
Jasmine Cato, *Trainer*  
Imani Kane, *Trainer*  
Lee Mabry, *Trainer*  
Ashley Martineau, *Program Coordinator*  
Ingrid Robledo, *Assistant to the Director*  
Meghan Strandell, *Career Program Manager*

## **posse new orleans**

Monica Sylvain, *Director*  
Mary Carlton, *Program Coordinator*  
Noelle Gipson, *Trainer*  
David Turner, *Trainer*  
Prisca Washington, *Program Director*  
Abby Whitmire, *Development Officer*

## **posse new york**

Dena Wallerson, *Director*  
Ellen W. Adnopez, *Assistant to the Director*  
Eloisa Almaraz, *Trainer*  
Joel Arce, *Trainer*  
Patrick Bourke, *Trainer*  
Ileana Casellas-Katz, *Program Director*  
Viviana Cordero, *Program Coordinator*  
Dashawn Ealey, *Trainer*  
Adam Esrig, *Trainer*  
Catherine Finneran, *Program Director*  
Gabe Gaskin, *Senior Trainer*  
Carlo Lindo, *Trainer*  
Shayla Mars, *Program Coordinator*  
Sara Nolfo, *Career Program Manager*  
Dan Papson, *Program Coordinator*  
Michael Williams, *Trainer*  
Susie Zavala, *Career Program Manager*  
Amanda C. Zayas, *Trainer*

*The lists above reflect staff  
as of June 2012.*

# contact posse

## **national office**

14 Wall Street, Suite 8A-60  
New York, NY 10005  
Tel: (212) 405-1691  
Fax: (212) 405-1697  
info@possefoundation.org

## **posse atlanta**

101 Marietta Street, N.W., Suite 1040  
Atlanta, GA 30303  
Tel: (404) 751-3340  
Fax: (404) 751-3349  
atlanta@possefoundation.org

## **posse boston**

45 Franklin Street, 3rd floor  
Boston, MA 02110  
Tel: (617) 523-4478  
Fax: (617) 523-4468  
boston@possefoundation.org

## **posse chicago**

111 West Jackson Boulevard, Suite 1900  
Chicago, IL 60604  
Tel: (312) 566-9790  
Fax: (312) 566-9796  
chicago@possefoundation.org

## **posse d.c.**

1319 F Street, N.W., Suite 604  
Washington, DC 20004  
Tel: (202) 347-7071  
Fax: (202) 347-7480  
dc@possefoundation.org

## **posse los angeles**

515 South Figueroa Street, Suite 300  
Los Angeles, CA 90071  
Tel: (213) 239-9590  
Fax: (213) 622-0978  
losangeles@possefoundation.org

## **posse miami**

1101 Brickell Avenue, Suite 1000N  
Miami, FL 33131  
Tel: (305) 377-3990  
Fax: (305) 377-3999  
miami@possefoundation.org

## **posse new orleans**

1515 Poydras Street, Suite 610  
New Orleans, LA 70112  
Tel: (504) 534-8648  
Fax: (504) 910-9967  
neworleans@possefoundation.org

## **posse new york**

14 Wall Street, Suite 8A-60  
New York, NY 10005  
Tel: (212) 405-1691  
Fax: (212) 405-1698  
newyork@possefoundation.org

## **opening in 2012: posse houston**

houston@possefoundation.org

## **visit posse on the web**

www.possefoundation.org



## **THE POSSE FOUNDATION 2011 ANNUAL REPORT**

editor: Rissan Salandy  
writer: Tsihai Hanson

designer: Kara Schindwein  
printer: Webster One Source, Hanson, Massachusetts

photo credit page 16: Official White House Photo by Pete Souza